



**2011-2012  
Yearbook**

# VAN-DE JERRY K-T-DID CRICKET

## EX-92 2E



**VAN-DE JERRY K-T-DID CRICKET**  
100430983 5-08 92 2E ELITE 88.87%

NM\$	+577								
PTA	+2.86SCC	+4.2PL	+0.6DPR						
PTA	+1488M	+65F	+56P						62R
PTA\$	+577CY								8/11
PTA%		+0.04	+0.05						
PTAT	+0.50T		29R						8/11
PPA	+4629M	+169F	+162P						
CLASS	ST8	SR6	BD7	DF8	RA5	RW7	LS6	FA7	
	FU4	UH9	UW8	UC7	UD3	TP6	TL6	LR8	
DHI			%	FAT	%	PRT			
1-09	2	305	19630	3.7	726	3.2	627		
		365	23330	3.8	881	3.2	755		
3-02	2	305	21650	4.1	891	3.3	713		
		326	22710	4.2	943	3.3	753		
4-02	2	305	22350	3.9	875	3.4	764		
		311	22660	3.9	889	3.4	775		
5-02	2	341	28640	4.1	1176	3.4	984		
6-02	2	257	21705	3.6	781	3.4	746		
									RIP
			ME 23602		861				815
			LIFE 1453	103280	4.0	4145	3.4	3473	

OBLIQUE DTR BORN 12/2010  
RANKED #2 APRIL 2011 HIGH CPI LIST  
RANKED #4 AUGUST 2011 HIGH CPI LIST

**CRICKET'S DAUGHTER:**  
**VAN-DE ORKKO CRICKET CROQUET**  
1-09 2 305 ME 19790 3.9 764 3.4 669  
RANKED #1 APRIL 2011 HIGH CPI LIST  
RANKED #3 AUGUST 2011 HIGH CPI LIST

**KILDARE JERRY-ET**  
10002432C  
PTA +2.45SCC +3.3PL -0.5DPR  
PTA +336M +38F +20P 94R  
PTA% +.14 +.05  
PTAT +.30T 87R 8/11  
D/AV 18988M 4.1 771F 3.2 614P 8.4T

**VAN-DE TBRUNO CANDIDA K-T-DID**  
100430956 5-05 86 77.75%

DHI			%	FAT	%	PRT
1-10	2	305	17400	4.1	708	3.3
		321	18220	4.1	748	3.3
2-11	2	305	17870	4.3	765	3.4
		310	18070	4.3	775	3.4
3-10	2	305	16790	4.1	691	3.4
		365	18610	4.1	763	3.4
5-02	2	305	20270	4.3	875	3.4
		319	20850	4.3	902	3.4
6-02	2	297	16580	4.0	655	3.4

SECOND DAM: EX-90  
THIRD DAM: VG-89

*"Cricket" is enrolled in our flush program. Contact us for more information.*

*Ski-Pal Ayrshires*  
**DAVE & KAREN KOSS & FAMILY**  
23820 E Pleasant Grove Rd.  
Epworth, IA 52045  
563.876.5569 • Cell 563.543.0440  
skipalayr@aol.com

*Lee's Dixieland*  
**LYNN LEE**  
P.O. Box 1229  
Smyrna, TN 31767  
Cell 615.390.6312  
lee\_lynn@bellsouth.net



# PALMYRA REALITY BONNIE-ET

## VG-88



### PALMYRA REALITY BONNIE-ET

65003767		4-05 88		ELITE P9		+525	
NM\$	+454						
PTA	+2.97SCC	+3.4PL	-1.7DPR				
PTA	+1441M	+68F	+42P	53R			
PTA\$	+454CY			8/11			
PTA%	+.06		-.02				
PTAT	+1.50T	58R		8/11			
PPA	+4301M	+237F	+133P				
CLASS	ST9	SR8	BD8	DF7	RA4	RW7	LS7
	FU8	UH8	UW7	UC7	UD7	TP5	TL8
							LR5
GOLD			%		FAT		%
2-03	2	305	21020	4.7	987	3.2	679
		365	24807	4.7	1166	3.3	818
3-08	2	305	24440	5.0	1230	3.3	815
		311	24850	5.0	1250	3.3	829

5TH SR 2 - 2009 INTERNAT'L SHOW  
 NOM ALL-AMERICAN SR 2-YEAR-OLD - 2009  
 3RD SR 3-YEAR-OLD - 2010 INTERNAT'L  
 HM ALL-AMERICAN SR 3-YEAR-OLD - 2010

MATERNAL SISTER TO BALTIMORE AT ABS  
 MATERNAL SISTER TO PALMYRA TRISTAR  
 BONNIE, EX-90, ALL-AMERICAN 5-YEAR-  
 OLD 2007

#6 CPI, 8/2011

OFFSPRING:  
 DAUGHTERS BY BENDIG & CALIMERO  
 BENDIG SON, BERKELY, AT SELECT SIRE

### PALMYRA TRI-STAR REALITY

100369452					
PTA	+2.91SCC	+1.9PL	-1.0DPR		
PTA	+1224M	+51F	+29P		81R
PTA%	+.02		-.05		
PTAT	+1.10T	62R		8/11	
D/AV	OM	OF		8.8T	

### PALMYRA RIPKEN J. BONNIE

100045224		6-07 93		2E	
GOLD			%		FAT % PRT
2-03	2	305	18590	4.4	821 3.1 582
		354	21190	4.4	942 3.2 675
3-05	2	305	23460	4.2	992 3.3 767
		365	27370	4.1	1130 3.3 892
5-03	2	305	26510	3.7	993 3.1 826
		317	27120	3.7	1013 3.1 846
6-03	2	305	27090	3.6	978 3.2 875
		344	28470	3.6	1034 3.2 920
7-04	2	305	23820	3.0	726 3.1 733
		365	27270	3.1	853 3.1 835
LIFE	2313	159830	3.8	6113	3.2 5120

HM ALL-AMERICAN JR 3-YEAR-OLD - 2001



18811 Wagaman Rd.  
 Hagerstown, MD 21740  
 Phone: 301.739.2729

Fax: 301.733.9255  
 palmyraayrshires@aol.com  
 www.palmyrafarm.net



# PALMYRA CALIMERO R. BAILEY-ET

VG-89



## PALMYRA CALIMERO R. BAILEY-ET

65003048 4-02 89 ELITE P9 95.37% +500  
 NM\$ +359  
 PTA +3.03SCC +2.1PL -0.7DPR  
 PTA +1238M +54F +39P 54R  
 PTA\$ +359CY 8/11  
 PTA% +.03  
 PTAT +1.40T 58R 8/11  
 PPA +4325M +194F +131P  
 CLASS ST7 SR6 BD7 DF8 RA6 RW6 LS5 FA7  
 FU7 UH8 UW7 UC6 UD5 TP6 TL6 LR6  
 GOLD % FAT % PRT  
 2-04 2 305 24210 4.0 972 3.2 766  
 365 27667 4.0 1112 3.2 893  
 3-07 2 305 26290 4.4 1163 3.2 837  
 365 29374 4.5 1309 3.3 959

1ST SR 2, 2009 MD STATE FAIR  
 2ND FALL CALF - 2007 MID-ATLANTIC  
 NAT'L  
 1ST FALL CALF - 2007 MID-ATLANTIC  
 NAT'L JR  
 HM JR ALL-AMERICAN FALL CALF - 2007

### FULL SISTER:

**PALMYRA CALIMERO BETHANY, VG-87**  
 ALL-AMERICAN YEARLING IN MILK, 2008  
 RES ALL-AMERICAN SR 2, 2009

## MARGOT CALIMERO

10310847C 90.75%  
 PTA +3.01SCC +1.4PL +1.2DPR  
 PTA +28M +14F +6P 94R  
 PTA% +.07 +.03  
 PTAT +1.10T 89R 8/11  
 D/AV 19194M 3.9 750F 3.2 609P 8.5T

## PALMYRA RIPKEN BETHANY

100203240 4-06 90  
 GOLD % FAT % PRT  
 2-01 2 305 22720 3.9 890 3.2 735  
 319 23630 3.9 922 3.2 765  
 3-01 2 305 24160 3.6 880 3.2 774  
 365 26160 3.7 974 3.2 843  
 4-03 2 305 23440 3.6 841 3.3 762  
 365 26319 3.6 936 3.2 850  
 5-10 2 280 18940 4.1 779 3.1 591

#11 CPI, 8/2011

OFFSPRING:  
 DAUGHTERS BY REALITY & POKER  
 REALITY SON, BRADDOCK, AT TAURUS



18811 Wagaman Rd.  
 Hagerstown, MD 21740  
 Phone: 301.739.2729

Fax: 301.733.9255  
 palmyraayrshires@aol.com  
 www.palmyrafarm.net

# PALMYRA TRISTAR R GINGER-ET

## VG-89



### PALMYRA TRISTAR R GINGER-ET

65003772		3-00 89	ELITE P9	+480	
NM\$	+395				
PTA	+2.74SCC	+3.1PL	-1.0DPR		
PTA	+1159M	+47F	+29P	53R	
PTA\$	+395CY			8/11	
PTA%		+01	-.04		
PTAT	+1.30T		51R	8/11	
PPA	+2430M	+133F	+57P		
CLASS	ST9 SR7 BD8 DF8 RAS RW6 LS5 FA7				
	FU7 UH8 UW7 UC9 UD7 TP7 TL4 LR6				
GOLD		%	FAT %	PRT	
2-07	2 305	21980	4.6	1022	3.1 681
	365	25137	4.7	1181	3.1 785

-----  
 1ST SR 2 - 2009 MID-ATLANTIC NAT'L  
 INT CHAMPION - 2009 MID-ATLANTIC NAT'L  
 1ST SR 2 - 2009 INTERNATIONAL  
 RES INT CHAMPION - 2009 INTERNATIONAL  
 UNAN ALL-AMERICAN SR 2 - 2009

FULL SISTER:  
 PALMYRA TRISTAR GISELLA-ET  
 2ND SR 2, 2009 INTERNAT'L

MATERNAL SISTER:  
 PALMYRA POKER GIGI-ET  
 5TH SR 2, 2010 INTERNAT'L  
 NOM ALL-AMERICAN SR 2, 2010

### PALMYRA TRI-STAR

150440					
PTA	+2.81SCC	+0.3PL	-0.3DPR		
PTA	+468M	+18F	+14P	96R	
PTAT	+1.90T		93R	8/11	
D/AV	18977M	3.9	734F	3.1 593P	8.4T

### PALMYRA RAVEN S. GINGER

100330199		6-03 89	ELITE		
DHIR		%	FAT %	PRT	
1-11	2 305	23330	3.0	693	3.0 703
	365	27710	3.0	841	3.0 842
3-04	2 305	22580	3.2	727	3.0 681
	334	23170	3.2	749	3.0 701
4-06	2 305	32700	4.6	1515	2.9 957
	365	35760	4.5	1626	2.9 1052
5-11	2 305	19880	4.0	805	2.9 585
	365	22720	4.0	899	2.9 670
LIFE	1686	119023	3.7	4446	3.0 3584

-----  
 ALL-AMERICAN FALL CALF - 2004  
 RES INT CHAMPION - 2005 MID-ATLANTIC  
 NAT'L  
 1ST FALL YEARLING IN MILK - 2005 CEN-  
 TRAL NAT'L  
 UNAN ALL-AMERICAN FALL YEARLING IN  
 MILK - 2005

#23 CPI, 8/2011

OFFSPRING: DAUGHTERS BY RIGGINS

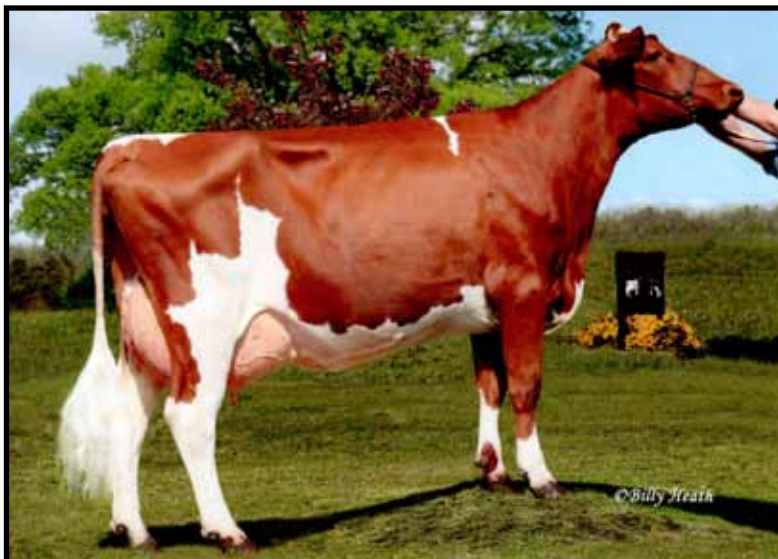


18811 Wagaman Rd.  
 Hagerstown, MD 21740  
 Phone: 301.739.2729

Fax: 301.733.9255  
 palmyraayrshires@aol.com  
 www.palmyrafarm.net

# PALMYRA RAVEN BERNETA-ET

## VG-88



### PALMYRA RAVEN BERNETA-ET

65459541	2-01	88		P9	+469			
NM\$	+236							
PTA	+3.10SCC	+1.9PL	-1.6DPR					
PTA	+1254M	+33F	+34P		48R			
PTA\$	+236CY				8/11			
PTA%		-.08	-.03					
PTAT	+1.40T		49R		8/11			
PPA	+3412M	+105F	+105P					
CLASS	ST7	SR6	BD6	DF7	RA6	RW5	LS5	FA6
	FU7	UH7	UW7	UC7	UD7	TP6	TL6	LR7
DHI				%	FAT	%	PRT	
2-00	2	305	19880	4.0	798	3.2	642	
		330	21290	4.0	857	3.2	690	

### GALNEY-EPC RIPKEN RAVEN

100203204					
PTA	+3.29SCC	-1.0PL	-0.9DPR		
PTA	+1263M	+20F	+26P		94R
PTA%		-.15	-.07		
PTAT	+1.10T		83R		8/11
D/AV	20638M	3.7	763F	3.1	632P 8.4T

### PALMYRA PARDNER T.S. BONNIE

100294794	3-09	90					
GOLD			%	FAT	%	PRT	
2-01	2	305	24840	4.1	1016	3.2	800
		365	29585	4.2	1228	3.3	964
3-04	2	305	26140	4.2	1089	3.1	806
		365	30840	4.1	1273	3.1	955

#32 CPI, 8/2011

FULL BROTHERS: BILICK AT SELECT  
SIREs & BOSTON AT GENEX

FULL SISTER:  
PALMYRA RAVEN BONNIE, VG-87

#26 CPI, 8/2011

1-11	2	305	22700	3.7	829	3.2	730
3-00	2	304	24426	3.8	928	3.2	772

UNAN ALL-AMERICAN JR 2 - 2005  
INT CHAMP - 2006 MID-ATLANTIC NAT'L  
2ND JR 3 - 2006 CENTRAL NAT'L  
RES ALL-AMERICAN JR 3 - 2006  
NOM ALL-AMERICAN 4-YEAR-OLD - 2007



18811 Wagaman Rd.  
Hagerstown, MD 21740  
Phone: 301.739.2729

Fax: 301.733.9255

palmyraayrshires@aol.com  
www.palmyrafarm.net

# MAPLE-DELL ZORRO DAFOURTH

## EX-95 2E



### MAPLE-DELL ZORRO DAFOURTH

100257070 6-06 95 2E ELITE P9 +486  
 NM\$ +486  
 PTA +2.89SCC +4.9PL +0.7DPR  
 PTA +698M +47F +22P 60R  
 PTA\$ +486CY 8/11  
 PTA% +.11  
 PTAT +1.60T 59R 8/11  
 PPA +3031M +174F +88P  
 CLASS ST9 SR9 BD8 DF7 RA6 RW9 LS5 FA8  
 FU7 UH7 UW7 UC8 UD7 TP8 TL6 LR8  
 GOLD % FAT % PRT  
 2-00 2 305 22380 4.3 958 3.3 737  
 3-00 2 310 22000 4.0 871 3.1 682  
 4-00 2 365 26200 4.6 1203 3.3 864  
 6-01 2 365 30950 4.5 1387 3.0 939  
 7-11 2 305 23770 4.4 1044 3.0 707  
 LIFE 1817 133160 4.3 5766 3.2 4198

NOM ALL-AMERICAN JR 2-YEAR-OLD - 2004  
 INT CHAMPION - 2005 MID-ATLANTIC  
 NAT'L  
 2ND JR 3 - 2005 CENTRAL NAT'L  
 RES ALL-AMERICAN JR 3-YEAR-OLD - 2005  
 GRAND CHAMPION - 2006 MID-ATLANTIC  
 NAT'L  
 2ND 4-YEAR-OLD - 2006 CENTRAL NAT'L  
 RES GRAND CHAMPION - 2006 CENTRAL  
 NAT'L  
 RES ALL-AMERICAN 4-YEAR-OLD - 2006

### KILDARE ZORRO ET (FC)

100159390  
 PTA +2.82SCC +1.5PL +0.1DPR  
 PTA -38M -5F -3P 84R  
 PTA\$ -0.02 -0.01  
 PTAT +.60T 77R 8/11  
 D/AV 18671M 3.7 686F 3.1 582P 8.3T

### MAPLE-DELL T S DARE

100154827 3-03 90  
 GOLD % FAT % PRT  
 1-11 2 249 14420 4.3 617 3.1 454  
 2-10 2 305 22280 4.8 1079 3.3 726  
 355 24070 4.8 1157 3.3 792  
 4-01 2 305 25160 4.9 1240 3.1 792  
 365 27290 4.9 1330 3.2 865

#16 CPI, 8/2011

SONS IN AI: DREW AT ACCELERATED  
 GENETICS, DREGO AT TAURUS & DARKER AT  
 SEMEX

DAUGHTER:  
 MAPLE-DELL TRIDENT DEE-ET, EX-91  
 2-04 2 358 21010 4.7 984 3.6 749  
 1ST SR 3, 2011 MID-ATLANTIC NAT'L  
 SHOW & 2ND SR 3 JR SHOW  
 RES INTERMEDIATE CHAMPION, 2011 MID-  
 ATLANTIC NAT'L JR

*Maple-Dell Farm*  
 DAVID PATRICK & FAMILY  
 1960 Daisy Rd., Woodbine, MD 21797  
 410.489.4160



# PALMYRA TRI-STAR BETHANY-ET

## EX-91



### PALMYRA TRI-STAR BETHANY-ET

PUREBRED AYRSHIRE 01/28/05 FEMALE  
 65000847 6-06 91 P9 +471  
 NM\$ +352  
 PTA +2.89SCC +2.9PL -0.1DPR  
 PTA +967M +31F +31P 59R  
 PTA\$ +352CY 8/11  
 PTA% -.03  
 PTAT +1.40T 57R 8/11  
 PPA +2848M +72F +81P  
 CLASS ST8 SR8 BD9 DF9 RA4 RW7 LS6 FA4  
 FU8 UH9 UW9 UC8 UD5 TP7 TL8 LR8  
 GOLD % FAT % PRT  
 2-01 2 305 15840 3.7 587 3.1 495  
 365 18360 3.8 697 3.2 588  
 3-06 2 305 20060 3.5 701 3.3 662  
 365 22880 3.6 814 3.3 762  
 4-10 2 305 20200 3.3 662 3.0 606  
 335 21230 3.3 704 3.1 649

### PALMYRA TRI-STAR

150440  
 PTA +2.81SCC +0.3PL -0.3DPR  
 PTA +468M +18F +14P 96R  
 PTAT +.90T 93R 8/11  
 D/AV 18977M 3.9 734F 3.1 593P 8.4T

### PALMYRA RENO BETHANY-ET

100101191 3-06 90  
 GOLD % FAT % PRT  
 1-11 2 305 22700 3.8 867 3.1 701  
 365 26925 3.9 1038 3.1 847  
 3-01 2 305 26910 3.6 959 3.3 875  
 365 30930 3.6 1104 3.3 1006  
 4-08 2 305 31920 3.9 1233 3.1 982  
 365 35780 3.8 1374 3.1 1123  
 LIFE 1551 120700 3.7 4496 3.2 3855

-----  
 2ND JR 2 - 2001 SOUTHERN NATIONAL  
 2ND JR 2 - 2001 SOUTHERN NATIONAL JR  
 HM ALL-AMERICAN JR 2 - 2001  
 JR ALL-AMERICAN JR 2 - 2001  
 2ND JR 3 - 2002 SOUTHERN NATIONAL  
 3RD JR 3 - 2002 SOUTHERN NATIONAL JR

#31 CPI 8/2011  
 FULL SISTER TO BURDETTE  
 CURRENTLY PREGNANT TO RIGGINS  
 WILL BE FLUSHED AFTER FRESHENING  
 RAMIUS EMBRYOS AVAILABLE

*Good-Use Ayr Farms*  
 MICHAEL & LINDA HANSON, DAVID, MATTHEW & STEVEN  
 35400 St. Hwy 1 NE  
 Goodridge, MN 56725  
 218.378.4588  
 miliha@gvtel.com

# HAWKSFIELD BRONARA-ET

## EX-94 4E



### HAWKSFIELD BRONARA-ET

PUREBRED AYRSHIRE 06/02/94 FEMALE  
1003063 12-02 94 4E ELITE P- +398

NM\$ +364  
PTA +2.92SCC +5.4PL +1.1DPR  
PTA +282M +23F +11P 68R  
PTA\$ +364CY 8/11

PTA% +.07 +.01  
PTAT 47R 8/11  
PPA +2117M +123F +73P

CLASS ST8 SR7 BD8 DF8 RAS RW7 LS6 FA6  
FU9 UH6 UW8 UC6 UD5 TP8 TL4 LR8

GOLD % FAT % PRT

DHI

2-05 2 285 17409 3.6 626 3.3 575

3-03 2 305 17429 5.4 942 3.8 655

365 20774 5.4 1117 3.8 781

4-03 2 305 21070 4.6 977 3.6 748

365 25511 4.6 1163 3.7 932

6-04 2 305 22290 4.7 1040 3.0 674

341 24660 4.5 1122 3.0 737

7-03 2 305 26030 3.5 908 3.0 789

365 30408 3.5 1078 3.0 926

9-02 2 305 18870 4.5 849 3.2 611

365 21862 4.6 1006 3.3 722

10-09 2 365 27534 4.7 1302 3.2 890

12-00 2 305 24610 4.2 1036 3.1 764

365 29445 4.1 1211 3.2 950

13-01 2 305 24030 3.5 831 2.9 690

LIFE 4654 308703 4.3 12941 3.310105

### DESBLAY REBEL WILLY

739413C

PTA +3.45SCC +1.6PL +0.3DPR

PTA -69M -14F -10P 95R

PTA\$ -06 -04

PTAT +.40T 89R 8/11

D/AV 17844M 3.8 675F 3.1 547P 8.4T

### ENGLAN ROYAL COMMAND BUD

912613 13-02 95 3E

DHIR % FAT % PRT

5-03 2 305 18220 3.6 658 3.2 584

340 18910 3.7 691 3.3 619

6-05 2 305 21210 3.8 804 3.2 680

318 21490 3.8 820 3.2 694

7-04 2 305 21850 3.6 794 3.2 701

356 23770 3.7 882 3.2 771

11-04 0 305 17200 5.0 861 3.2 547

365 19560 5.0 977 3.2 628

DHI

2-01 2 297 8370 3.8 320 3.3 280

3-02 2 250 11090 4.1 457 3.5 390

4-01 2 305 13310 4.0 538 3.7 489

LIFE 2349 118950 4.0 4802 3.3 3957

1ST 6TH GENERATION EXCELLENT OF BREED  
DAM OF BASES LOADED AT SEMEX  
DAM OF 5 EX DAUGHTERS

NOM ALL-AMERICAN AGED COW - 2001  
GRAND CHAMPION, 1999 MI DAIRY EXPO

*Elite Genetics*

**DRU & SARA MERCER**

4173 E SR 67, Bryant, IN 47326

260.997.1495

Cell: 574.727.9192

druandsara@bright.net

*Hawksfield Farm*

**CHARLES SAYLES**

150 E. Braden Rd., Perry, MI 48872

517.625.3886

Cell: 517.290.6627

ayrhawk2@gmail.com

# HAWKSFIELD BLACK BRONARA-ET

## EX-93



### HAWKSFIELD BLACK BRONARA-ET

PUREBRED AYRSHIRE 06/04/05 FEMALE  
100433632

	5-04	93		P9	+399
NM\$	+270				
PTA	+3.02SCC	+4.4PL	+0.6DPR		
PTA	+96M	+13F	+7P		56R
PTA\$	+270CY				8/11
PTA%		+0.05	+0.02		
PTAT	+0.60T		40R		8/11
PPA	+1462M	+95F	+51P		
CLASS	ST8	SR7	BD7	DF8	RA6
	FU7	UH7	UW7	UC7	UD7
					TP6
					TL4
					LR7
DHI				%	FAT
					%
2-00	2	305	18278	3.9	714
		365	21748	3.9	849
3-02	2	305	19160	4.7	895
4-09	2	305	24920	3.9	963

-----  
 1ST SUMMER YRLG - 2006 SOUTHERN NAT'L  
 NOM ALL-AMERICAN SUMMER YRLG - 2006  
 HM ALL-AMERICAN JR 2-YEAR-OLD - 2007  
 NOM ALL-AMERICAN JR 3-YEAR-OLD - 2008  
 GRAND CHAMPION, 2010 IN STATE FAIR  
 2ND 5-YEAR-OLD - 2010 INTERNATIONAL  
 HM ALL-AMERICAN - 2010

### BLACKADDAR B B KELLOGG

	777850C				
PTA	+3.13SCC	+2.1PL	-0.1DPR		
PTA	-735M	-32F	-14P		97R
PTA%		-0.02	+0.05		
PTAT	+1.30T		95R		8/11
D/AV	17869M	3.8	685F	3.2	570P

### HAWKSFIELD BRONARA-ET

	1003063	12-02	94	4E	ELITE		
GOLD			%	FAT	%	PRT	
2-05	2	285	17409	3.6	626	3.3	575
3-03	2	305	17429	5.4	942	3.8	655
		365	20774	5.4	1117	3.8	781
4-03	2	305	21070	4.6	977	3.6	748
		365	25511	4.6	1163	3.7	932
6-04	2	305	22290	4.7	1040	3.0	674
		341	24660	4.5	1122	3.0	737
7-03	2	305	26030	3.5	908	3.0	789
		365	30408	3.5	1078	3.0	926
9-02	2	305	18870	4.5	849	3.2	611
		365	21862	4.6	1006	3.3	722
10-09	2	365	27534	4.7	1302	3.2	890
12-00	2	305	24610	4.2	1036	3.1	764
		365	29445	4.1	1211	3.2	950
13-01	2	305	24030	3.5	831	2.9	690
LIFE	4654	308703	4.3	12941	3.3	310105	

-----  
 NOM ALL-AMERICAN AGED COW - 2001

*Elite Genetics*

**DRU & SARA MERCER**

4173 E SR 67, Bryant, IN 47326

260.997.1495

Cell: 574.727.9192

druandsara@bright.net

*Hawksfield Farm*

**CHARLES SAYLES**

150 E. Braden Rd., Perry, MI 48872

517.625.3886

Cell: 517.290.6627

ayrhawk2@gmail.com

# HAWKSFIELD BOOMER BRONARA

## EX-92



### HAWKSFIELD BOOMER BRONARA

PUREBRED AYRSHIRE 09/30/98 FEMALE  
100090149

6-11 92 P- +391

NM\$	+192							
PTA	+2.90	SCC	+1.9	P	+0.2	DPR		
PTA\$	+151M		+28F		+6P		60R	
PTA\$	+192CY						8/11	
PTA%			+.12		+.01			
PTAT					55R		8/11	
PPA	+1949M		+136F		+64P			
CLASS	ST9	SR9	BD8	DF8	RA5	RW8	LS7	FA5
	FU7	UH7	UW8	UC7	UD6	TP7	TL5	LR7
DHI			%		FAT		%	
2-08	2	305	17680	4.4	777	3.2	560	
4-00	2	305	21770	4.5	986	2.8	617	
6-05	2	305	22310	4.5	998	3.4	754	
			318	23030	4.5	1035	3.4	781
7-05	2	305	21930	3.9	845	3.2	709	
8-11	2	254	11900	4.7	556	3.4	404	
			305	13150	4.7	617	3.4	447
			336	13670	4.7	636	3.4	463
LIFE	2175	125250	4.5	5638	3.3	4188		

GRAND CHAMPION, 2001 MI DAIRY EXPO  
1ST AGED COW - 2005 SOUTHERN NATIONAL  
NOM ALL-AMERICAN AGED COW - 2005  
2ND AGED COW - 2006 SOUTHERN NATIONAL  
GRAND CHAMPION, 2006 IN STATE FAIR

### MACKAYR BONNY'S BOOMER

145893

### HAWKSFIELD BRONARA-ET

	1003063	12-02	94	4E	ELITE			
GOLD					%		FAT % PRT	
2-05	2	285	17409	3.6	626	3.3	575	
3-03	2	305	17429	5.4	942	3.8	655	
			365	20774	5.4	1117	3.8	781
4-03	2	305	21070	4.6	977	3.6	748	
			365	25511	4.6	1163	3.7	932
6-04	2	305	22290	4.7	1040	3.0	674	
			341	24660	4.5	1122	3.0	737
7-03	2	305	26030	3.5	908	3.0	789	
			365	30408	3.5	1078	3.0	926
9-02	2	305	18870	4.5	849	3.2	611	
			365	21862	4.6	1006	3.3	722
10-09	2	365	27534	4.7	1302	3.2	890	
12-00	2	305	24610	4.2	1036	3.1	764	
			365	29445	4.1	1211	3.2	950
13-01	2	305	24030	3.5	831	2.9	690	
LIFE	4654	308703	4.3	12941	3.3	310105		

NOM ALL-AMERICAN AGED COW - 2001

1ST 7TH GENERATION EXCELLENCE OF BREED  
DAM OF BLUE SKY AT TAURUS  
DAM OF 1 EXCELLENT DAUGHTER

*Elite Genetics*

**DRU & SARA MERCER**

4173 E SR 67, Bryant, IN 47326  
260.997.1495

Cell: 574.727.9192

druandsara@bright.net

*Hawksfield Farm*

**CHARLES SAYLES**

150 E. Braden Rd., Perry, MI 48872  
517.625.3886

Cell: 517.290.6627

ayrhawk2@gmail.com

# HAWKSFIELD B.C. BRONARA

## EX-92



### HAWKSFIELD B.C. BRONARA

PUREBRED AYRSHIRE 10/10/00 FEMALE  
100183199

6-11 92 ELITE P7 +446  
 NMS +405  
 PTA +2.98SCC +4.4PL +1.2DPR  
 PTA +933M +32F +30P 53R  
 PTA\$ +405CY 8/11  
 PTA%  
 PTAT +.20T 25R 8/11  
 PPA +3358M +102F +110P  
 CLASS ST8 SR9 BD8 DF8 RA8 RW8 LSS FA6  
 FU7 UH5 UW8 UC6 UDS TP7 TL6  
 DHI % FAT % PRT  
 2-10 2 305 19940 3.2 638 3.3 667  
 308 20070 3.2 642 3.3 672  
 3-09 2 207 14440 2.6 381 3.3 476  
 305 21620 3.6 776 3.2 695  
 4-11 2 305 22910 4.4 1014 3.3 759  
 6-08 2 305 19560 3.5 692 3.0 590  
 7-10 2 305 21060 3.8 803 3.0 628  
 9-07 2 305 16660 3.4 572 3.2 528  
 LIFE 2589 149400 3.7 5478 3.3 4923

# 86 CPI, 8/11

NOM ALL-AMERICAN SR 3-YEAR-OLD - 2004

DAM OF 2 EXCELLENT DAUGHTERS  
 A 7TH GENERATION EXCELLENT  
 DAM OF 1ST 8TH GENERATION EXCELLENT,  
 HAWKSFIELD RAVEN ROSEBUD

### HAWKSFIELD BANK CARD

100066359

### HAWKSFIELD BRONARA-ET

1003063 12-02 94 4E ELITE  
 GOLD % FAT % PRT  
 2-05 2 285 17409 3.6 626 3.3 575  
 3-03 2 305 17429 5.4 942 3.8 655  
 365 20774 5.4 1117 3.8 781  
 4-03 2 305 21070 4.6 977 3.6 748  
 365 25511 4.6 1163 3.7 932  
 6-04 2 305 22290 4.7 1040 3.0 674  
 341 24660 4.5 1122 3.0 737  
 7-03 2 305 26030 3.5 908 3.0 789  
 365 30408 3.5 1078 3.0 926  
 9-02 2 305 18870 4.5 849 3.2 611  
 365 21862 4.6 1006 3.3 722  
 10-09 2 365 27534 4.7 1302 3.2 890  
 12-00 2 305 24610 4.2 1036 3.1 764  
 365 29445 4.1 1211 3.2 950  
 13-01 2 305 24030 3.5 831 2.9 690  
 LIFE 4654 308703 4.3 12941 3.3 10105

NOM ALL-AMERICAN AGED COW - 2001

*Elite Genetics*

**DRU & SARA MERCER**

4173 E SR 67, Bryant, IN 47326

260.997.1495

Cell: 574.727.9192

druandsara@bright.net

*Hawksfield Farm*

**CHARLES SAYLES**

150 E. Braden Rd., Perry, MI 48872

517.625.3886

Cell: 517.290.6627

ayrhawk2@gmail.com



# JSB-ACRES DREAM

## EX-94 2E



### JSB-ACRES DREAM

PUREBRED AYRSHIRE 12/11/02 FEMALE  
 100293618 7-04 94 2E P- +281  
 CLASS ST9 SR7 BD8 DF7 RA4 RW7 LS5 FA6  
 FU7 UH8 UW8 UC6 UD6 TP7 TLS LR9

2ND WINTER YRLG - 2004 SOUTHERN NAT'L JR  
 NOM ALL-AMERICAN WINTER YRLG - 2004  
 NOM JR ALL-AMERICAN WINTER YRLG-2004  
 3RD SR 2 - 2005 SOUTHERN NAT'L JR  
 2ND 4-YR - 2007 MID-ATLANTIC NAT'L  
 2ND 4-YR - 2007 MID-ATLANTIC NAT'L JR  
 RES SR CHAMP-2007 MID-ATLANTIC NAT'L JR  
 2ND 4-YR - 2007 SOUTHERN NAT'L  
 1ST 4-YR - 2007 SOUTHERN NAT'L JR  
 RES JR ALL-AMERICAN 4-YR - 2007  
 1ST 5-YR - 2008 MID-ATLANTIC NAT'L JR  
 SR CHAMPION - 2008 MID-ATLANTIC NAT'L JR  
 GRAND CHAMPION - 2008 MID-ATLANTIC NAT'L JR  
 3RD 5-YEAR-OLD - 2008 MID-ATLANTIC NAT'L  
 HM JR ALL-AMERICAN 5-YEAR-OLD - 2008

### EMBRYO-STAR STONE-ET

804946C  
 PTA +3.43SCC +0.2PL +1.5DPR  
 PTA +432M +3F +2P 93R  
 PTA% -.07 -.06  
 PTAT +.50T 84R 8/11  
 D/AV 18125M 3.8 685F 3.1 555P 8.5T

### MILL-VALLEY MAGGIE'S DREAM

1019221

*JSB Acres*

BILLY, MELINDA & JOEY BRANSTETTER  
 EMILY & ANDY PIKE  
 2392 Roberts Road, Hardyville, KY 42346  
 270.565.4751  
 billyb@scrtc.com

# BONNIE BRAE AERO

## EX-92



### BONNIE BRAE AERO

PUREBRED AYRSHIRE 06/11/05 FEMALE  
100536812 4-03 92 P5 +321  
CLASS ST9 SR9 BD9 DF8 RA5 RW9 LS7 FA7  
FU7 UH8 UW9 UC8 UD7 TP7 TL5 LR8  
3-06 2 288 16855 3.7 621 3.2 538  
4-07 2 305 20688 3.5 718 3.0 630

### BONNIE BRAE KODIAK -ET

8370342C

### BONNIE BRAE NABOB

8370346C

-----

RES ALL-CANADIAN SUMMER YRLG, 2006  
1ST JR 3 - 2008 CENTRAL NAT'L  
UNAN ALL-AMERICAN JR 3 - 2008  
2ND 4-YEAR-OLD - 2009 INTERNATIONAL  
RES SR CHAMPION - 2009 INTERNATIONAL  
1ST 4-YEAR-OLD - 2009 SOUTHERN NAT'L  
RES ALL-AMERICAN 4-YEAR-OLD - 2009  
GRAND CHAMPION, 2011 IN STATE FAIR  
GRAND CHAMPION, 2011 MN STATE FAIR

---

*Premium Star*

HERMAN & KATHLEEN HOFFMAN

10066 League Line Rd.

Conroe, TX 77304

936.856.9988

# SWEET PEPPER BONNIE SOPHIA

## EX-94



**SWEET PEPPER BONNIE SOPHIA**

PUREBRED AYRSHIRE 07/31/90 FEMALE  
 978673 12-02 94 3E P- +108  
 3-10 2 305 15060 4.1 619 3.4 517  
 11-03 2 340 13250 3.9 521 3.0 391

GRAND CHAMPION, 1995 EASTERN STATES  
 NAT'L  
 RES ALL-AMERICAN 5-YEAR-OLD, 1995

**DAUGHTERS - FULL SISTERS:**

**SWEET-PEPPER JAYE SHERRY, EX-93 4E**  
 LIFE 2525 117510 4.5 5335 3.4 3986  
 HM GRAND CHAMPION, 2011 EASTERN  
 STATES NAT'L SHOW

**SWEET-PEPPER JAYE SHANIA, EX-90**  
 4-11 2 324 19520 4.2 826 3.1 598  
 UNAN ALL-AMERICAN 5-YEAR-OLD, 2004

**SWEET-PEPPER JAYE SAHARA, EX-90**  
 LIFE 2078 94100 4.5 4224 3.3 3141

**SWEET-PEPPER JAYE SAFFRON, EX-90**  
 LIFE 1678 78220 4.4 3432 3.1 2459

8 NATURAL DAUGHTERS, ALL EX OR VG  
 4 EX DAUGHTERS ARE FULL SISTERS

**BONNIE BRAE KELLOGG**

140914  
 PTA +2.91SCC +3.1PL +0.7DPR  
 PTA -1192M -43F -35P 96R  
 PTA% +.02 +.02  
 PTAT +1.20T 93R 8/11  
 D/AV 15573M 3.9 606F 3.1 490P 8.3T

**COTTRELL'S JEDI SASSAFRAS**

943685 2-11 80  

DHIR			%	FAT	%	PRT
2-04	2	305	13320	3.8	503	3.4 457
		365	15600	3.8	594	3.5 542
3-08	2	305	13340	4.0	539	3.5 471
4-08	2	305	13200	4.0	529	3.6 473
		312	13370	4.0	538	3.6 481
5-08	2	305	14210	4.0	573	3.4 481
		309	14330	4.0	577	3.4 485
7-08	2	305	14290	3.7	532	3.4 490
9-01	2	282	13290	4.2	552	3.6 475

**SOPHIA'S GRANDDAUGHTERS:**

**SWEET-PEPPER TRIDENT SONORA, EX-92**  
 1ST 5-YEAR-OLD, 2010 EASTERN STATES  
 NAT'L

**SWEET-PEPPER BLACK SHELBY, EX-90**

**SOPHIA'S GREAT-GRANDDAUGHTER:**  
**SWEET-PEPPER HANNIBAL SHANNON**  
 JR CHAMPION, 2010 EASTERN STATES  
 NAT'L

*Sweet-Pepper Farm*  
**CRAIG & BONNIE HAWKSLEY**  
 230 James Trail  
 West Kingston, RI 02892  
 401.539.2753

# LASHBURN BELINDA

## EX-92



### LASHBURN BELINDA-ET

PUREBRED AYRSHIRE 09/18/05 FEMALE  
100571338 4-07 92 P6 +321  
CLASS ST9 SR7 BD7 DF7 RA6 RW9 LS6 FA7  
FU7 UH9 UW8 UC8 UD6 TP7 TL6 LR8  
2-10 2 305 14053 3.6 500 3.5 494

-----  
3RD SR 2, 2008 RAWF  
NOM ALL-CANADIAN SR 2, 2008  
1ST SR 3 - 2009 SOUTHERN NATIONAL  
INT CHAMPION - 2009 SOUTHERN NATIONAL  
HM ALL-AMERICAN SR 3-YEAR-OLD - 2009

PREVIOUS #1 CONFORMATION COW IN  
CANADA AT +16 FOR TYPE

CALIMERO SON BEING USED AT SKI-PAL  
SEMEN WILL BE AVAILABLE

### BLACKADDAR B B KELLOGG

777850C  
PTA +3.13SCC +2.1PL -0.1DPR  
PTA -735M -32F -14P 97R  
PTA% -02 +.05  
PTAT +1.30T 95R 8/11  
D/AV 17869M 3.8 685F 3.2 570P

### WOODLAND VIEW BETTY 3

793371EX 93-6E  
7-08 2 305 14290 3.7 532 3.4 490  
4-07 2 305 20133 4.1 822 3.5 697  
5-09 2 305 19105 4.0 756 3.4 657  
8-05 2 305 23001 4.5 1045 3.3 756  
10-07 2 305 26746 4.4 1164 3.2 860  
14-03 2 305 23625 4.9 1155 3.1 743  
LIFE 213044 4.3 9289 3.4 7282

-----  
GRAND CHAMPION, 1999 INTERNAT'L  
SPRING SHOW  
GRAND CHAMPION, 1997 WDE  
INT CHAMPION, 1996 WDE  
RES GRAND CHAMPION, 1998 & 1999 RAWF  
RES ALL-CANADIAN, 1998 & 1999  
NOM ALL-AMERICAN AGED COW - 2001

*Chelsey Partners*

MR & MRS GERALD KOSS, JIM & SHARON TENTINGER & STEVE MCDONALD  
Princeton, IL  
815.875.3516

# RIGHT-ANGLE T HARLEY

## EX-93



### RIGHT-ANGLE T HARLEY

PUREBRED AYRSHIRE 03/12/04 FEMALE  
 100364699 5-08 93 2E P- +309  
 NM\$ -125  
 PTA +3.13SCC -0.1PL +0.4DPR  
 PTA -355M -26F -13P 51R  
 PTA\$ -125CY 8/11  
 PTA%  
 PTAT +.30T 33R 8/11  
 PPA -841M -62F -27P  
 CLASS ST9 SR7 BD9 DF8 RAS RW8 LS6 FA7  
 FU7 UH9 UW9 UC7 UD6 TP5 TL7 LR8  
 DHI % FAT % PRT  
 2-00 2 281 14290 3.7 526 3.3 465  
 2-11 2 305 16980 3.3 552 3.2 549  
 346 18410 3.4 624 3.3 605  
 4-02 2 264 14430 3.3 475 3.3 469

NOM ALL-AMERICAN SPRING CALF - 2004  
 HM JR ALL-AMERICAN SPRING CALF - 2004  
 NOM ALL-AMERICAN SPRING YRLG - 2005  
 RES JR ALL-AMERICAN SPRING YRLG - 2005  
 NOM ALL-AMERICAN JR 2-YEAR-OLD - 2006  
 RES JR ALL-AMERICAN JR 2-YEAR-OLD - 2006  
 RES ALL-AMERICAN 4-YEAR-OLD - 2008  
 RES GRAND CHAMPION - 2009 SOUTHERN NAT'L  
 RES ALL-AMERICAN 5-YEAR-OLD - 2009

### RIGHT ANGLE BBBK TRAVELER

100226069  
 PTA +3.12SCC -0.2DPR  
 PTA -118M -19F -6P 62R  
 PTA% -0.08 -0.01  
 PTAT +.60T 48R 8/11  
 D/AV 18794M 3.8 705F 3.1 592P 8.7T

### EXSELL EVOLUTION HYACINTHE

100207646 4-06 88  
 GOLD % FAT % PRT  
 3-07 3 304 23720 4.0 957 3.0 721  
 4-06 2 305 17710 4.3 764 3.2 575  
 5-09 3 279 13600 4.2 573 2.9 394

MARCH 2011 BURDETTE DAUGHTER

SENATOR SON: SKI-PAL HARLEY HUMMER-ET  
 30 DAUGHTERS ON THE GROUND

*Ski-Pal Ayrshires*

DAVID & KAREN KOSS

23820 E Pleasant Grove Rd.

Epworth, IA 52045

563.876.5569 • Cell: 563.543.0440

skipalayr@aol.com

*Yarrabee Cows LLC*

MAYNARD LANG & FAMILY

1832 400th Ave.

Brooklyn, IA 552211

641.990.6977

641.990.5096 Dane



# SKI-PAL BURDETTE HANNAH



## SKI-PAL BURDETTE HANNAH

PUREBRED AYRSHIRE 05/18/08 FEMALE  
100541346

P8 +394

NM\$	+146				
PTA	+2.93SCC	+2.5PL	+1.0DPR		
PTA	+159M	-11F	+6P	47R	
PTA\$	+146CY			8/11	
PTA%	+380M	-.09	+.01		
PPA		-51F	+10P		
DHI		%	FAT %	PRT	
2-02	2 286	17850	3.5	618 3.5	616

1ST JR 2 - 2010 CENTRAL NATIONAL JR  
3RD JR 2 - 2010 INTERNATIONAL  
HM ALL-AMERICAN JR 2-YEAR-OLD - 2010  
JR ALL-AMERICAN JR 2-YEAR-OLD - 2010  
1ST JR 3 - 2011 IA STATE FAIR

WILL BE ON IVF PROGRAM

1ST 2 TESTS THIS LACT: 98 & 117 LBS

OWNED WITH MITCHEL MCDERMOTT

## PALMYRA TRI-STAR BURDETTE-ET

100419568

PTA	+2.73SCC	+4.6PL	+1.2DPR		
PTA	+636M	+22F	+25P	93R	
PTA%		-.01	+.03		
PTAT	+2.00T		85R	8/11	
D/AV	19351M	3.9	748F	3.2 611P	8.4T

## RIGHT-ANGLE T HARLEY

100364699 5-08 93

DHI		%		2E		
2-00	2 281	14290	3.7	526	3.3	465
2-11	2 305	16980	3.3	552	3.2	549
		346	18410	3.4	624	3.3 605
4-02	2 264	14430	3.3	475	3.3	469

NOM ALL-AMERICAN SPRING CALF - 2004  
HM JR ALL-AMERICAN SPRING CALF - 2004  
NOM ALL-AMERICAN SPRING YRLG - 2005  
RES JR ALL-AMERICAN SPRING YRLG - 2005  
NOM ALL-AMERICAN JR 2-YEAR-OLD - 2006  
RES JR ALL-AMERICAN JR 2-YEAR-OLD - 2006  
RES ALL-AMERICAN 4-YEAR-OLD - 2008  
RES GRAND CHAMPION - 2009 SOUTHERN NAT'L  
RES ALL-AMERICAN 5-YEAR-OLD - 2009

*Ski-Pal Ayrshires*

DAVID & KAREN KOSS  
23820 E Pleasant Grove Rd.

Epworth, IA 52045

563.876.5569 • Cell: 563.543.0440

skipalayr@aol.com

# S&M-AYR MARATHON'S MARION

## VG-88

### S&M-AYR MARATHON'S MARION

PUREBRED AYRSHIRE 10/28/96 FEMALE  
1017768

			8-07	88				P6	+406
NM\$	+339								
PTA	+2.70SCC	+3.1PL	+0.7DPR						
PTA	+1046M	+34F	+20P						66R
PTA\$	+339CY								8/11
PTA%		-.03	-.07						
PTAT	-.80T							52R	8/11
PPA	+3580M	+110F	+76P						
CLASS	ST6 SR6	BD7 DF8	RA4 RW6	LS5 FA4					
	FU7 UH5	UW5 UC5	UD4 TP5	TL7 LR4					
GOLD		%	FAT	%	PRT				
2-08	2 305	19070	3.8	731	3.0	579			
5-00	2 305	22870	3.6	825	2.9	652			
6-04	2 305	22760	3.9	885	2.9	663			
7-10	2 305	24350	3.7	897	2.9	699			
	355	26340	3.7	986	2.9	763			
8-11	2 259	4950	3.5	175	3.3	163			
9-10	2 305	25140	3.4	865	2.8	715			
11-06	2 305	21480	3.8	807	2.9	633			
13-00	2 305	18360	3.6	654	3.0	549			
LIFE	3564	229687	3.7	8474	3.0	6905			

### LAGACE MARATHON-ET

145038  
 PTA +2.89SCC +2.9PL +1.6DPR  
 PTA +610M +25F +15P 96R  
 PTA% +.01 -.02  
 PTAT -.40T 90R 8/11  
 D/AV 18632M 3.9 723F 3.1 577P 8.3T

### S&M-AYR JOHNNY'S MARBLE

976998  
 DHI % FAT % PRT  
 4-10 2 305 22930 3.6 821 3.1 715  
 5-10 2 295 21540 3.5 760 3.2 685

### OUTSTANDING DAUGHTERS:

**S&M-AYR DILLIGENT'S MARION 2ND, VG-85**  
 2-10 2 303 14520 4.0 577 3.1 445  
 RANKED #42 AUGUST 2011 HIGH CPI LIST

### S&M-AYR OLYMPIC 2'S MARGO, EX-90

6-01 2 323 22870 3.9 892 2.9 673  
 OVER 130,000 LIFETIME

---

*S&M Ayr Farm*  
 MIKE ZOOK  
 300 Poplar Street  
 Honey Brook, PA 19344  
 610.273.7245

# HALL'S MEDALIST PAULA

## EX-91



*© Lisa M. Lovelough  
The American Quarter Horse Association*

### HALL'S S MEDALIST PAULA

PUREBRED AYRSHIRE 01/16/05 FEMALE  
 100404605 5-10 91 P5 +320  
 NM\$ +290  
 PTA +2.90SCC +5.1PL +0.6DPR  
 PTA +730M +14F +14P 56R  
 PTA\$ +290CY 8/11  
 PTA% - .07 - .05  
 PPA +4593M +127F +116P  
 CLASS ST9 SR8 BD7 DF7 RA5 RW7 LS6 FA7  
 FU7 UH6 UW7 UC7 UDS TP6 TL4 LR7  
 GOLD % FAT % PRT  
 2-06 2 305 20450 3.6 736 2.9 592  
 364 23380 3.6 846 2.9 687  
 3-07 2 305 25570 3.4 870 3.0 760  
 319 26580 3.4 900 3.0 791  
 4-11 2 230 27160 3.1 850 3.1 835

3RD 5-YEAR-OLD - 2010 SOUTHERN NAT'L  
 NOM ALL-AMERICAN 5-YEAR-OLD - 2010

### SAGUENAYENNE KATE MEDALIST-ET

10027041C  
 PTA +3.07SCC +4.2PL +0.4DPR  
 PTA -297M -17F -9P 90R  
 PTA% - .03  
 PTAT +.80T 69R 8/11  
 D/AV 18020M 3.8 681F 3.1 564P 8.3T

### ILLINI BRENDAN POLITA

100202306 9-10 85  
 GOLD % FAT % PRT  
 2-01 2 283 15090 3.8 573 2.9 431  
 3-01 2 297 19630 3.7 724 3.0 591  
 4-00 2 305 21230 3.2 680 2.9 625  
 308 21330 3.2 686 2.9 629  
 5-02 2 305 13940 3.7 509 3.3 462  
 6-08 2 280 19130 3.5 662 2.9 560  
 7-10 2 305 15310 3.3 506 3.0 458  
 8-10 2 305 25980 2.6 676 2.9 754  
 365 27510 2.6 712 2.9 803  
 LIFE 2273 134400 3.3 4417 3.0 4021

*Hall's Ayrshires*

GENE HALL JR  
 346494 East 760 Road  
 Cushing, OK 74023  
 405.740.3085

# TMB SPECIAL K HELOISE

## EX-92 2E



### TMB SPECIAL K HELOISE

PUREBRED AYRSHIRE 07/19/04 FEMALE  
100386275

	5-01	92		2E	P7	+370		
NMS	+277							
PTA	+2.89SCC	+4.6PL	+1.4DPR					
PTA	+162M	+6F	+4P			59R		
PTA\$	+277CY						8/11	
PTA%			-.01					
PTAT	-.10T		28R				8/11	
PPA	+1641M	+68F	+75P					
CLASS	ST6	SR6	BD8	DF8	RA6	RW8	LS6	FA6
	FU7	UH9	UW9	UC6	UD4	TP7	TL5	LR8
GOLD			%	FAT	%	PRT		
2-08	2	258	18140	4.4	802	3.2	580	
3-07	2	305	23760	4.0	950	3.4	809	
5-01	2	305	26290	3.4	883	3.6	947	
		346	28050	3.4	941	3.6	1014	

-----  
 1ST 5-YR-OLD - 2009 INTERNAT'L JR  
 2ND 5-YR-OLD - 2009 SOUTHERN NAT'L JR  
 UNAN JR ALL-AMERICAN 5-YR-OLD - 2009  
 3RD AGED COW - 2010 SOUTHERN NAT'L

### FOREVER SCHOON SPECIAL K

10305587C								
PTA	+2.99SCC	+4.3PL	+1.5DPR					
PTA	-163M	-7F	-13P			96R		
PTA%		-.01	-.04					
PTAT	-.10T		89R				8/11	
D/AV	17595M	3.8	668F	3.1	541P		8.3T	

### TMB STARDOM HOLLYBERRY

100386266	9-02	92			3E			
GOLD		%	FAT	%	PRT			
4-01	2	305	27460	3.9	1065	3.1	859	
		328	28728	3.9	1109	3.2	906	
5-03	2	252	15310	4.2	643	3.1	482	
6-03	2	305	23910	4.5	1070	3.4	811	
		365	27340	4.4	1192	3.4	932	

-----  
 3RD 4-YR-OLD - 2006 CENTRAL NATIONAL  
 NOM ALL-AMERICAN 4-YR-OLD - 2006  
 NOM ALL-AMERICAN 5-YR-OLD - 2007

*Hall's Ayrshires*  
 GENE HALL JR  
 346494 East 760 Road  
 Cushing, OK 74023  
 405.740.3085

# DALTONDALE TUXEDO ROSA

## EX-91



### DALTONDALE TUXEDO ROSA

PUREBRED AYRSHIRE 09/01/06 FEMALE  
100460434 4-02 91 P9 +455

NM\$	+187								
PTA	+2.94SCC	+0.7PL	-0.2DPR						
PTA	+549M	+22F	+28P	51R					
PTA\$	+187CY			8/11					
PTA%			+0.6						
PTAT	+1.20T		53R	8/11					
PPA	+4824M	+184F	+173P						
CLASS	ST9 SR7 BD8 DF9 RA5 RW7 LS6 FA5								
	FU7 UH8 UW7 UC7 UD5 TP6 TLS LR5								
GOLD			%	FAT %	PRT				
2-08	2 305	28140	3.9	1101	3.4	961			

RANKED #57 AUGUST 2011 HIGH CPI LIST

JR CHAMPION - 2007 SOUTHERN NAT'L  
RES ALL-AMERICAN FALL CALF - 2007  
JR CHAMPION - 2008 CENTRAL NAT'L JR  
JR CHAMPION - 2008 CENTRAL NAT'L  
JR CHAMPION - 2008 SOUTHERN NAT'L JR  
JR CHAMPION - 2008 SOUTHERN NAT'L  
UNAN ALL-AMERICAN FALL YRLG - 2008  
UNAN JR ALL-AMERICAN FALL YRLG - 2008  
RES JR ALL-AMERICAN SR 2 - 2009  
NOM JR ALL-AMERICAN SR 3 - 2010

### BONNIE BRAE TUXEDO

10301466C  
PTA +2.84SCC -0.8PL -0.3DPR  
PTA -598M -20F -10P 88R  
PTA% +.02 +.05  
PTAT +.40T 83R 8/11  
D/AV 18371M 3.8 706F 3.2 579P 8.4T

### DALTONDALE BBL ROSETIP

100381935 4-04 87  
DHI % FAT % PRT  
2-02 2 305 11080 3.9 435 3.5 383  
4-00 2 305 15680 3.9 608 3.5 542  
5-09 2 305 15480 4.1 633 3.3 504

UNAM ALL-AMERICAN SUMMER YRLG - 2005

NEXT DAM: VG-86

*Hall's Ayrshires*  
GENE HALL JR  
346494 East 760 Road  
Cushing, OK 74023  
405.740.3085



# ROYALE-DIVIDE WILTON SPECIAL

## EX-94 2E



### ROYALE-DIVIDE WILTON SPECIAL

PUREBRED AYRSHIRE 11/01/04 FEMALE  
100395057

	6-00	94	2E P-	+351	
NMS	-88				
PTA	+3.10SCC	-0.4PL	-1.2DPR		
PTA	-321M	-16F	+3P	52R	
PTA\$	-88CY			8/11	
PTA%					
PTAT	+ .70T	-.02	+.07		
PPA	-22M	-22F	+53P	57R	8/11
CLASS	ST9	SR9	BD9	DF7	RA5
	FU7	UH8	UW9	UC6	UD5
	TP5	TL6	LR8		
GOLD			%	FAT	%
2-05	2	268	16690	4.2	696
				3.3	547

### LABRIE WILTON-ET

10304106C  
PTA +3.25SCC -2.5PL -1.6DPR  
PTA -53M -13F +11P 97R  
PTA% - .06 +.07  
PTAT +.70T 92R 8/11  
D/AV 18577M 3.8 698F 3.2 595P 8.4T

### ROYALE-DIVIDE BRENDAN SABRINA

100185977 5-03 88  
GOLD % FAT % PRT  
2-04 2 305 15410 4.3 661 3.2 489  
309 15590 4.3 667 3.2 494  
3-04 2 209 10370 5.9 609 3.2 336

UNAN ALL-AMERICAN SR 2-YEAR-OLD - 2007  
RESERVE GRAND CHAMPION - 2008 CENTRAL NATIONAL JR  
HM ALL-AMERICAN SR 3-YEAR-OLD - 2008  
UNAN JR ALL-AMERICAN SR 3-YEAR-OLD - 2008  
HM JR ALL-AMERICAN 4-YEAR-OLD - 2009  
GRAND CHAMPION - 2010 SOUTHERN NATIONAL JR  
GRAND CHAMPION - 2010 SOUTHERN NATIONAL  
RES ALL-AMERICAN 5-YEAR-OLD - 2010  
JR ALL-AMERICAN 5-YEAR-OLD - 2010

*Hall's Ayrshires*  
GENE HALL JR  
346494 East 760 Road  
Cushing, OK 74023  
405.740.3085

# MOWRY'S POKER PRECIOUS

## VG-87



### MOWRY'S POKER PRECIOUS

PUREBRED AYRSHIRE 03/05/09 FEMALE  
 100563874 2-03 87 P7 +391  
 PTAT +1.20T 45R 8/11  
 CLASS ST9 SR8 BD8 DF7 RA5 RW7 LS6 FA5  
 FUG UH7 UW7 UC5 UD6 TP5 TL6 LR7

2-03 2 PROJ 17191 3.8 645 3.0 511

HM JR ALL-AMERICAN SPRING CALF - 2009  
 NOM ALL-AMERICAN SPRING YRLG - 2010  
 NOM JR ALL-AMERICAN SPRING YRLG -  
 2010  
 1ST JR 2 - 2011 MID-ATLANTIC NAT'L JR  
 1ST JR 2 - 2011 MID-ATLANTIC NAT'L  
 RES INT CHAMP - 2011 MID-ATLANTIC  
 NAT'L

BURDETTE BULL CALF AVAILABLE

### DES CHAMOIS POKER-ET

8401621C  
 PTA +2.89SCC +2.4PL  
 PTA +79M +15F -1P 94R  
 PTA% +.07 -.02  
 PTAT +1.30T 87R 8/11  
 D/AV 19893M 3.9 780F 3.1 621P 8.5T

### MOWRY'S TRIDENT PRISSY-ET

100434325 4-08 93  
 GOLD FAT % PRT  
 2-04 2 305 17440 3.4 586 2.9 499  
 325 18220 3.4 612 2.9 525  
 3-05 2 304 15550 3.5 539 3.0 474  
 4-05 2 305 16500 3.2 535 2.8 470  
 349 17510 3.2 567 2.9 504

NOM ALL-AMERICAN FALL CALF - 2006  
 3RD SR 2 - 2008 MID-ATLANTIC NAT'L

### NEXT DAM:

#### PLUM-BOTTOM SOLDIER PERSIPHENE

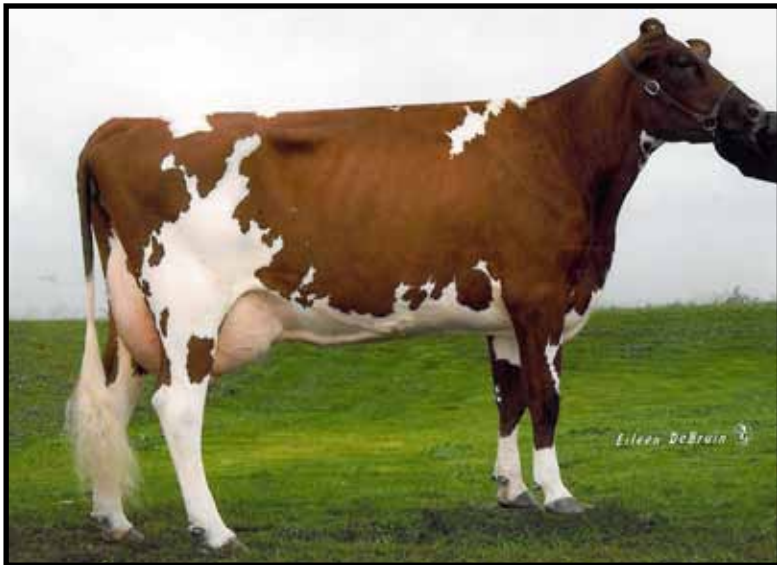
100114098 9-02 94 3E  
 GOLD FAT % PRT  
 7-03 2 305 29400 3.5 1032 2.8 814  
 365 33000 3.6 1174 2.8 934  
 LIFE 2663 176340 3.8 6631 3.0 5248

NOM ALL-AMERICAN SR 3-YEAR-OLD - 2002  
 JR ALL-AMERICAN SR 3-YEAR-OLD - 2002  
 HM ALL-AMERICAN 4-YEAR-OLD - 2003  
 NOM ALL-AMERICAN 5-YEAR-OLD - 2004

*Mowry Homestead*  
**JASON MOWRY**  
 3400 Lafayette Rd.  
 Roaring Springs, PA 16673  
 814.215.1492

# FOGGY-VALLEY WILTON NEPTUNE

## EX-92 3E



### FOGGY-VALLEY WILTON NEPTUNE

PUREBRED AYRSHIRE 06/13/04 FEMALE

100367647 7-03 92 3E P6 +379

NM\$ +34

PTA +3.09SCC +1.2PPL -0.4DPR

PTA +25M -9F +7P 57R

PTA\$ +34CY 8/11

PTA% -0.05 +.03

PTAT +1.10T 54R 8/11

PPA +1144M -1F +53P

CLASS ST9 SR7 BD7 DF8 RA6 RW8 LS6 FA6

FU7 UH8 UW7 UC8 UD6 TP7 TL6 LR7

GOLD % FAT % PRT

2-00 2 294 14510 4.0 576 3.5 504

2-11 2 305 16630 3.6 594 3.4 558

345 17700 3.7 647 3.4 596

4-01 2 305 18170 3.6 663 3.4 617

365 19440 3.7 717 3.4 662

5-05 2 305 28380 3.4 957 3.3 933

365 30640 3.4 1052 3.4 1027

2ND JR 3 - 2007 CENTRAL NAT'L  
RES ALL-AMERICAN JR 3 - 2007

### LABRIE WILTON-ET

10304106C

PTA +3.25SCC -2.5PL -1.6DPR

PTA -53M -13F +11P 97R

PTA% -0.06 +.07

PTAT +.70T 92R 8/11

D/AV 18577M 3.8 698F 3.2 595P 8.4T

### FOGGY-VALLEY PARDNER NOUGAT-ET

100190885 3-07 81

GOLD % FAT % PRT

2-03 2 305 11970 3.6 435 3.2 381

338 12790 3.7 475 3.2 409

3-03 2 305 13000 3.7 475 3.2 414

365 14890 3.7 551 3.2 477

4-08 2 305 18940 3.5 654 3.1 578

323 19660 3.5 687 3.1 603

5-07 2 305 16080 3.5 569 3.2 513

7-00 2 305 17030 3.7 627 2.9 491

365 18970 3.7 695 2.9 556

### NEXT DAM:

MOY-AYR BONOPARTE NICKI, EX-91

LIFE 3719 173970 3.8 6642 3.2 5502

NOM JR ALL-AMERICAN AGED COW - 2001

*Foggy Valley*

JOHN & SHAUNA OFFER, HUNTER & PEYTON

1768 Rangeline Rd.

Auburndale, WI 54412

715.384.4383

# BAR-VUE BURT SARA

## EX-90



### BAR-VUE BURT SARA

PUREBRED AYRSHIRE 09/05/07 FEMALE  
 64343543 3-09 90 ELITE P9 +439  
 NM\$ +428  
 PTA +2.68SCC +5.0PL +0.9DPR  
 PTA +799M +14F +25P 51R  
 PTA\$ +428CY 8/11  
 PTA% -.09  
 PTAT +.70T 41R 8/11  
 PPA +2547M +42F +72P  
 CLASS ST7 SR6 BD6 DF6 RA6 RW7 LS6 FA5  
 FU7 UH8 UW7 UC4 UD7 TP4 TL7 LR8  
 2-08 2 301 16309 3.7 607 3.1 504  
 3-07 2 119 9982 3.0 300 2.9 290  
 ME 20486 641 622

### PALMYRA TRI-STAR BURDETTE-ET

100419568  
 PTA +2.73SCC +4.6PL +1.2DPR  
 PTA +636M +22F +25P 93R  
 PTA% -.01 +.03  
 PTAT +2.00T 85R 8/11  
 D/AV 19351M 3.9 748F 3.2 611P 8.4T

### BAR-VUE LOT SILLY

100277609 4-01 87  
 DHI % FAT % PRT  
 2-06 2 291 12390 3.8 469 3.0 367  
 3-05 2 272 15680 3.7 584 3.2 508  
 4-04 2 291 16790 3.9 647 3.3 546  
 5-03 2 305 17740 3.9 694 3.1 557  
 316 18090 3.9 708 3.1 569  
 6-03 2 305 17960 3.7 660 3.2 582  
 7-06 2 305 17980 3.7 661 3.0 546  
 360 18780 3.7 690 3.1 578  
 LIFE 1936 101510 3.8 3819 3.2 3218

BEING FLUSHED TO OBLIQUE - 2 A.I.  
 CONTRACTS

MOTOWN SON AVAILABLE BORN 4/11

### NEXT DAM:

#### BAR-VUE MILL MOOKY, VG=88

3-10 2 305 18610 3.3 606 3.1 575  
 5-03 2 305 20880 3.6 757 3.1 644  
 6-09 2 305 18050 3.5 626 3.3 596  
 8-01 2 305 18610 3.5 643 3.1 575  
 LIFE 2529 128800 3.5 4525 3.2 4079

*Irthum Farm, Inc.*

JOHN IRRTHUM

43424 135th Ave., Wanamingo, MN 55983

507.824.2141

HOME OF BAR-VUE BATTLE PENNY, EX-91 2E

6-10 2 305 31180 4.2 1346 3.0 963

WINNER OF THE 2010 AYRSHIRE TROPHY & TOTAL PERFORMANCE AWARD

# PINEVILLE-FARM PARDNER LEXUS

## EX-92



### PINEVILLE-FARM PARDNER LEXUS

PUREBRED AYRSHIRE 10/03/05 FEMALE

100519361 5-06 92 P8 +402

NM\$ +193

PTA +3.00SCC +0.6PL -0.5DPR

PTA +827M +42F +20P 55R

PTA\$ +193CY 8/11

PTA% +.05 -.03

PPA +3075M +109F +66P

CLASS ST8 SR7 BD8 DF8 RA7 RW7 LS3 FA7

FU7 UH6 UW6 UC8 UD4 TP7 TL3 LR6

GOLD % FAT % PRT

2-07 3 305 26180 4.2 1109 3.1 818

4-02 3 305 22030 4.5 993 3.1 680

312 22420 4.5 1010 3.1 695

### WOODLAND VIEW PARDNER-ET

811799C

PTA +2.87SCC +2.5PL -0.5DPR

PTA +483M +25F +9P 98R

PTA% +.04 -.03

PTAT +.20T 95R 8/11

D/AV 19074M 3.9 745F 3.1 595P 8.3T

### PINEVILLE-FARM HEXEL

100241312 5-03 83

GOLD % FAT % PRT

2-02 2 276 18100 4.2 754 3.1 562

3-01 2 305 22620 4.2 955 3.1 700

316 23260 4.2 984 3.1 721

4-02 2 305 22900 4.1 950 3.1 719

350 24990 4.2 1044 3.2 789

5-03 2 305 18600 4.1 771 3.1 569

306 18630 4.1 773 3.1 570

6-03 2 305 17940 3.9 701 3.0 544

7-06 2 305 14200 4.0 571 3.2 455

326 14590 4.0 589 3.2 469

LIFE 1992 120580 4.1 4981 3.1 3766

*Kler-Vu Dairy*

TOM GILLETTE

4791 East Rd.

Turin, NY 13473

315.348.8681

j.gillette@southlewis.org



# HIDDEN-VALLEY KINSMAN BOBBIE

EX-90



## HIDDEN-VALLEY KINSMAN BOBBIE

PUREBRED AYRSHIRE 03/08/02 FEMALE  
100250907 8-07 89 P- +321

NM\$ +10  
PTA +2.90SCC +2.1PL +1.3DPR  
PTA -502M -16F -21P 60R  
PTA\$ +10CY 8/11  
PTA%  
PTAT +.40T 58R 8/11  
PPA -1442M -47F -49P

CLASS	ST8	SR6	BD7	DF7	RA4	RW6	LS6	FA5
	FU6	UH6	UW5	UC6	UD7	TP8	TL6	LR4
DHI				%	FAT	%	PRT	
2-02	2	305	13370	4.0	533	3.0	405	
		352	14830	4.0	598	3.1	456	
3-03	2	305	12060	3.9	470	3.2	380	
		317	12410	3.9	485	3.2	393	
4-04	2	305	13360	4.0	540	3.0	404	
		339	14200	4.1	580	3.1	434	
5-05	2	300	14370	3.9	564	3.0	427	
6-05	2	305	13020	3.7	481	3.1	401	
7-05	2	256	10660	3.4	367	3.2	341	
8-04	2	283	11490	3.8	432	3.1	358	

2ND SPRING YRLG - 2003 MID-ATLANTIC  
NAT'L  
3RD SPRING YRLG - 2003 SOUTHERN NAT'L

## SUNNY-ACRES JADE'S KINSMAN

143563  
PTA +2.77SCC +2.5PL +1.9DPR  
PTA -639M -20F -23P 78R  
PTA\$ +.03 -.02  
PTAT +.30T 79R 8/11  
D/AV 17478M 3.9 677F 3.1 536P 8.4T

## DUNCRAVEN HELIGO BELLISSIMA

CLASS	1002112	4-05	85	%	FAT	%	PRT
GOLD							
DHI							
2-02	2	305	14840	3.9	586	3.3	497
3-02	2	285	14280	3.9	564	3.2	464
4-02	2	303	15230	3.7	564	3.2	480
5-01	2	305	18350	3.6	656	3.0	545
		364	19450	3.6	695	3.0	585
6-03	2	305	10770	3.4	365	2.9	310
		308	10850	3.4	368	2.9	313
7-03	2	305	15240	3.8	583	2.9	449
		340	15800	3.8	602	2.9	465
8-05	2	305	8290	3.2	262	3.1	254
		329	8620	3.2	273	3.1	264

HAS 12 DAUGHTERS BY NOLAN, WILTON,  
TRIDENT, RAMIUS, POKER & GARTH

DAUGHTER:  
HIDDEN-VALLEY WILTON BROOKE, VG-89

GRANDSON: HIDDEN-VALLEY GARTH'S  
BRANDON AT TAURUS

GARTH EMBRYOS AVAILABLE

*Hidden Valley Ayrshires*

ROYSTON G. COALE III

11534 Cash Smith Rd.

Keymar, MD 27157

717.309.7022

littleredcows@aol.com

# BRICKER-FARMS RAVEN CHELSEA

## EX-92



### BRICKER-FARMS RAVEN CHELSEA

PUREBRED AYRSHIRE 12/02/03 FEMALE

100343229 7-00 92 P7 +414

NM\$ +58

PTA +3.11SCC -0.6PL -0.3DPR

PTA +362M +22F +14P 56R

PTA\$ +58CY 8/11

PTA% +.04 +.01

PTAT +1.10T 52R 8/11

PPA +1266M +95F +57P

CLASS ST9 SR8 BD8 DF8 RA6 RW9 LS6 FA4

FU7 UH7 UW8 UC6 UD5 TP7 TL5 LR8

DHI % FAT % PRT

2-09 2 305 19320 4.0 773 3.3 633

4-03 2 302 19600 4.2 818 3.5 680

5-03 2 305 23190 4.4 1021 3.3 757

### GALNEY-EPC RIPKEN RAVEN

100203204

PTA +3.29SCC -1.0PL -0.9DPR

PTA +1263M +20F +26P 94R

PTA% -0.15 -0.07

PTAT +1.10T 83R 8/11

D/AV 20638M 3.7 763F 3.1 632P 8.4T

### LEMOLA CARL CARLY

100068285 12-01 92 4E

DHI % FAT % PRT

2-11 2 305 12570 4.8 600 3.3 415

329 13330 4.8 639 3.3 443

3-11 2 305 9610 4.8 460 3.7 353

335 9780 4.8 466 3.7 360

5-00 2 355 11790 4.5 527 3.5 410

8-00 2 298 19290 4.1 784 3.3 643

9-00 2 305 19580 4.1 811 3.4 667

345 20640 4.2 866 3.4 710

10-06 2 305 16150 4.9 792 3.2 520

11-09 2 305 14830 5.2 766 3.4 502

LIFE 2341 108040 4.6 4956 3.4 3669

*Bricker Farms*

TODD & JOE BRICKER

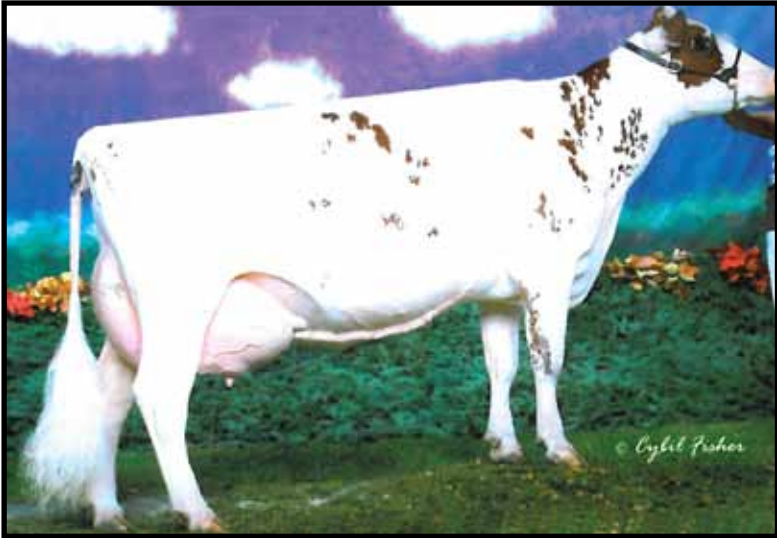
16122 W. South Range Rd.

Beloit, OH 44609

330.692.2877

# ONWORD BBBK ABIGAIL

## EX-93 2E



### ONWORD BBBK ABIGAIL

PUREBRED AYRSHIRE 03/12/03 FEMALE  
 100316678 7-01 93 2E P5 +362  
 NM\$ +103  
 PTA +2.94SCC +2.1PL +0.2DPR  
 PTA +112M -2F -2P 58R  
 PTA\$ +103CY 8/11  
 PTA% -.03 -.03  
 PTAT +.40T 35R 8/11  
 PPA +1252M +18F +7P  
 CLASS ST9 SR9 BD9 DF8 RAS RW9 LS7 FA6  
 FU7 UH9 UW8 UC7 UD3 TP7 TLS LR8  
 GOLD % FAT % PRT  
 2-00 2 305 23140 4.0 918 3.0 688  
 363 25990 4.1 1074 3.1 800  
 3-02 2 305 20540 3.8 785 3.2 658  
 365 22950 3.8 876 3.2 740  
 5-00 2 305 29870 3.8 1133 3.0 890  
 365 33940 3.8 1298 3.0 1027  
 6-06 2 362 25600 3.6 922 3.0 780

NOM JR ALL-MERICAN SPRING CALF 2003  
 RES INT CHAMP - 2006 CENTRAL NATIONAL  
 ALL-AMERICAN JR 3-YEAR-OLD - 2006

### BLACKADDAR B B KELLOGG

777850C  
 PTA +3.13SCC +2.1PL -0.1DPR  
 PTA -735M -32F -14P 97R  
 PTA% -.02 +.05  
 PTAT +1.30T 95R 8/11  
 D/AV 17869M 3.8 685F 3.2 570P

### MAPLEBURN HELIGO'S ADREANA

100142752 7-05 87  
 GOLD % FAT % PRT  
 6-03 2 245 15840 4.2 667 3.0 471

OFFSPRING BY CALIMERO, MODEM &  
 REALITY  
 BULLS FOR SALE

## Onword Swiss

DENNIS & JOAN WORDEN  
 NOAH, JACOB & LOGAN  
 17195 45th St., Oelwein, IA 50662  
 319.283.4544 or 319.238.1477 (Jacob)  
 onwordswiss@msn.com

LANCE & JONNA (WORDEN) SCHUTTE  
 BLAKE & BRIELLA  
 13254 Hickory Ave., Monona, IA 52159  
 563.539.4599 or 563.608.0335 (Jonna)  
 jolanedairy@gmail.com

# ONWORD CALIMERO ADDY-ET

## EX-92



### ONWORD CALIMERO ADDY-ET

95.37% AYRSHIRE 12/30/07 FEMALE  
100535811 3-07 92 P8 +399  
NM\$ +244  
PTA +3.00SCC +3.5PL +1.2DPR  
PTA +252M +15F +7P 49R  
PTA\$ +244CY 8/11  
PTA%  
PTAT +.60T -.01 29R 8/11  
PPA +1303M +64F +32P  
CLASS ST9 SR8 BD9 DF8 RAS RW9 LS5 FA7  
FU7 UH9 UW9 UC8 UD7 TP7 TL7 LR7  
GOLD % FAT % PRT  
2-03 2 305 22300 3.9 872 3.1 695  
365 26060 3.9 1010 3.1 824

ALL-AMERICAN WINTER CALF - 2008  
JUNIOR CHAMPION - 2009 INTERNATIONAL  
UNAN ALL-AMERICAN WINTER YRLG - 2009  
ALL-CANADIAN WINTER YRLG - 2009  
RES INT CHAMP - 2010 INTERNATIONAL  
ALL-AMERICAN SR 2-YEAR-OLD - 2010

DAUGHTERS BY REALITY, POKER & WILTON  
SON BY POKER

### MARGOT CALIMERO

10310847C 90.75%  
PTA +3.01SCC +1.4PL +1.2DPR  
PTA +28M +14F +6P 94R  
PTA% +.07 +.03  
PTAT +1.10T 89R 8/11  
D/AV 19194M 3.9 750F 3.2 609P 8.5T

### ONWORD BBBK ABIGAIL

100316678 7-01 93 2E  
2-00 2 305 23140 4.0 918 3.0 688  
363 25990 4.1 1074 3.1 800  
3-02 2 305 20540 3.8 785 3.2 658  
365 33940 3.8 876 3.2 740  
5-00 2 305 29870 3.8 1133 3.0 890  
365 33940 3.8 1298 3.0 1027  
6-06 2 362 25600 3.6 922 3.0 780

NOM JR ALL-MERICAN SPRING CALF 2003  
RES INT CHAMP - 2006 CENTRAL NATIONAL  
ALL-AMERICAN JR 3-YEAR-OLD - 2006

*Onward Swiss*

DENNIS & JOAN WORDEN  
NOAH, JACOB & LOGAN

17195 45th St., Oelwein, IA 50662  
319.283.4544 or 319.238.1477 (Jacob)  
onwordswiss@msn.com

LANCE & JONNA (WORDEN) SCHUTTE  
BLAKE & BRIELLA

13254 Hickory Ave., Monona, IA 52159  
563.539.4599 or 563.608.0335 (Jonna)  
jolanedairy@gmail.com

# MANDACRES CALIMERO JUMANDA

## EX-92



### MANDACRES CALIMERO JUMANDA

95.37% AYRSHIRE 12/03/06 FEMALE  
 100473368 3-11 92 P- +343 95.37%

NM\$ +183  
 PTA +3.00SCC +2.9PL +1.3DPR  
 PTA -276M +12F +2P 53R  
 PTA\$ +183CY 8/11  
 PTA% +.13 +.06  
 PPA -709M +36F +20P

CLASS	ST9	SR7	BD7	DF7	RA6	RW7	LS4	FA8
	FU8	UH8	UW8	UC8	UD6	TP6	TL6	LR8

DHI 3-04 2 289 17290 3.8 665 3.6 618

INT CHAMPION-2010 MID-ATLANTIC NAT'L  
 INT CHAMPION - 2010 INTERNAT'L  
 UNAN ALL-AMERICAN SR 3 - 2010  
 RES GRAND CHAMPION - 2011 MID-ATLANTIC NAT'L

EMBRYOS BY LOCHURST KELLOGG HERMAN  
 AVAILABLE

### MARGOT CALIMERO

10310847C 90.75%  
 PTA +3.01SCC +1.4PL +1.2DPR  
 PTA +28M +14F +6P 94R  
 PTA% +.07 +.03  
 PTAT +1.10T 89R 8/11  
 D/AV 19194M 3.9 750F 3.2 609P 8.5T

### MANDACRES CORNELIUS JULIUS

100173594

DHI			%	FAT	%	PRT
2-08	2	305	17540	4.7	829	3.1 544
		342	18920	4.7	895	3.1 593
3-09	2	277	14940	4.2	633	3.2 475
4-09	2	305	16640	4.6	772	3.1 524
6-02	2	305	17240	4.8	836	3.1 537
7-10	2	305	12690	4.4	557	3.1 396

### NEXT DAM: MANDACRES JOSIE

4-04	2	305	19030	3.6	685	2.8 526
5-08	2	305	18180	4.1	742	2.8 511
		347	18980	4.1	770	2.8 536

*Mandacres Farm*

SAL & JEANNE LICATA

KEVIN & AMANDA ROTTINGEN

263 Petkewec Rd., Cooperstown, NY 13326

607.293.7392

amandalicata@yahoo.com



# MILLER'S BURT BRAN MUFFIN



## MILLER'S BURT BRAN MUFFIN

PUREBRED AYRSHIRE 03/31/08 FEMALE  
63970258

P6 +374

NM\$	+218						
PTA	+2.84SCC	+1.6PL	-0.1DPR				
PTA	+587M	+22F	+19P		35R		
PTA\$	+218CY				8/11		
PPA	+2176M	+72F	+68P				
GOLD		%	FAT %		PRT		
2-02	2 305	18690	3.7	700	3.2	592	
	365	21880	3.8	821	3.2	704	

-----  
 1ST JR 2 - 2010 SOUTHERN NATIONAL  
 INT CHAMP - 2010 SOUTHERN NATIONAL  
 RES ALL-AMERICAN JR 2-YEAR-OLD - 2010

## MILLER'S TRI-STAR BURT

63970243

## MILLER'S DREAM BUFF

100440953	4-01	91					
GOLD		%	FAT %		PRT		
2-04	2 305	18980	4.5	854	3.2	606	
3-07	2 304	22690	4.1	925	3.4	766	
4-06	2 305	22900	4.0	914	3.3	748	
	365	25950	4.1	1057	3.3	863	

## NEXT DAM:

### MILLER'S JAMES BUFFY, VG-88

GOLD		%	FAT %		PRT		
2-00	2 286	14840	3.8	568	3.3	487	
3-00	2 305	17050	4.2	723	3.5	589	
	331	17640	4.2	742	3.5	611	
4-01	2 281	17320	3.9	682	3.2	555	
5-00	2 293	20560	4.2	856	3.3	683	
6-00	2 305	20950	3.6	746	3.1	658	
	365	22830	3.5	807	3.1	719	
7-05	2 305	21910	3.7	816	3.2	704	
	365	24350	3.7	904	3.3	800	
9-02	2 305	21330	3.6	772	3.2	692	
LIFE	2742	168240	3.8	6456	3.3	5510	

*Miller's Ayrshires*

JACK & MICK MILLER

12261 Pemberville Rd.

Bradner, OH 43406

Jack & Farm: 419.288.2834

Mick: 419.288.2210

# SUNNY-ACRES HARMONY'S KENNEDY

**EX-94**



*© Crystal Fisher*

**SUNNY-ACRES HARMONY'S KENNEDY**  
 PUREBRED AYRSHIRE 03/29/07 FEMALE  
 100492594 4-04 94 P- +326

NMS	+59							
PTA	+2.89SCC	+3.5PL	+1.2DPR					
PTA	-693M	-24F	-20P	53R				
PTA\$	+59CY			8/11				
PTA%		+0.2	+0.1					
PTAT	+0.80T		53R	8/11				
PPA	-1479M	-56F	-39P					
CLASS	ST8	SR7	BD7	DF8	RA5	RW8	LS6	FA7
	FU9	UH8	UW9	UC8	UD6	TP8	TL2	LR8
GOLD				%	FAT	%	PRT	
2-03	2	294	17920	3.6	654	3.0	539	
3-02	2	287	17400	3.8	668	3.3	582	

**KELLCREST HARMONY-ET**  
 10029042C

PTA	+2.75SCC	+2.0PL	+1.9DPR		
PTA	-1091M	-34F	-34P	96R	
PTA%		+0.5			
PTAT	+0.40T		87R	8/11	
D/AV	17328M	3.9	671F	3.1	544P 8.4T

**SUNNY-ACRES BRENDAN'S KINETA**  
 100283769 4-11 85

GOLD				%	FAT	%	PRT
2-02	2	305	19310	3.5	674	3.0	571
		365	22380	3.5	773	3.0	668
3-08	2	305	23240	3.6	846	3.3	767
		334	24180	3.7	893	3.3	808
4-09	2	296	19360	3.0	573	3.3	641
5-08	2	209	14770	3.6	535	3.2	471

HM JR ALL-AMERICAN SPRING CALF - 2007  
 NOM ALL-AMERICAN SPRING YRLG - 2008  
 UNAN JR ALL-AMERICAN SPRING YRLG - 2008  
 INT CHAMP-2009 MID-ATLANTIC NAT'L JR  
 RES INT CHAMP - 2009 MID-ATLANTIC NAT'L  
 UNAN ALL-AMERICAN JR 2 - 2009  
 UNAN JR ALL-AMERICAN JR 2 - 2009  
 RES INT CHAMP - 2010 MID-ATLANTIC NAT'L  
 RES ALL-AMERICAN JR 3 - 2010  
 GRAND CHAMPION - 2011 MID-ATLANTIC NAT'L

**NEXT DAM:**  
**SUNNY-ACRES JJ KINETA 2-ET, EX-91**

GOLD				%	FAT	%	PRT
2-11	2	305	20640	4.5	933	3.4	695
		308	20770	4.5	939	3.4	701
3-10	2	305	21440	3.8	819	3.2	678
		365	24390	4.0	986	3.3	793
5-09	2	305	23790	3.7	878	3.1	741
		313	24220	3.7	895	3.1	756
6-10	2	305	18380	3.7	687	3.3	600
		314	18510	3.7	693	3.3	606
LIFE	1888	117640	4.0	4758	3.2	3801	

BRED & OWNED BY GREGORY EVANS

2ND JR 2 - 2000 EASTERN NAT'L  
 2ND JR 2 - 2000 EASTERN NAT'L JR

*Sunny Acres*  
**DOUG & KATHY EVANS & FAMILY**  
 4106 Davenport Rd., Georgetown, NY 13072  
 315.837.4777 • Andrew Cell 315.750.0719 • Gregory Cell 315.456.8283  
 sunnyacresayrshires@gmail.com

# STILLMORE BBBK KLASSY

## EX-94 2E



### STILLMORE BBBK KLASSY

PUREBRED AYRSHIRE 09/04/03 FEMALE  
 100326965 5-10 94 2E P7 +381  
 NM\$ +124  
 PTA +2.97SCC +3.1PL +0.6DPR  
 PTA -338M -14F -5P 62R  
 PTA\$ +124CY 12/11  
 PTA%  
 PTAT +1.60T +.03 58R 12/11  
 PPA -359M +4F +14P  
 CLASS ST8 SR7 BD7 DF8 RA6 RW8 LS6 FA7  
 FU8 UH8 UW8 UC7 UD4 TP7 TL3 LR7  
 GOLD % FAT % PRT  
 2-10 2 293 17250 4.1 707 3.6 629  
 3-09 2 280 18470 4.0 733 3.5 647  
 4-09 2 315 19530 3.9 767 3.3 649  
 5-09 2 310 21430 4.1 870 3.3 712  
 6-09 2 365 28550 3.8 1078 3.5 1001  
 LIFE 1563 105230 3.9 4155 3.5 3638

### KLASSY SHOW WINNINGS:

2ND FALL CALF - 2004 CENTRAL NAT'L  
 RES ALL-AMERICAN FALL CALF - 2004  
 2ND FALL YRLG - 2005 MID-ATLANTIC NAT'L  
 2ND FALL YRLG - 2005 CENTRAL NAT'L  
 RES ALL-AMERICAN FALL YEARLING - 2005  
 1ST SR 2 - 2006 MID-ATLANTIC NAT'L  
 1ST SR 2 - 2006 SOUTHERN NAT'L  
 HM ALL-AMERICAN SR 2-YEAR-OLD - 2006  
 2ND SR 3 - 2007 MID-ATLANTIC NAT'L  
 RES INT CHAMP - 2007 MID-ATLANTIC NAT'L  
 2ND SR 3-YEAR-OLD - 2007 CENTRAL NAT'L  
 RES INT CHAMPION - 2007 CENTRAL NAT'L  
 2ND SR 3-YEAR-OLD - 2007 SOUTHERN NAT'L  
 RES INT CHAMPION - 2007 SOUTHERN NAT'L

### BLACKADDAR B B KELLOGG

777850C  
 PTA +3.13SCC +2.2PL -0.1DPR  
 PTA -726M -32F -14P 98R  
 PTA% -0.02 +.05  
 PTAT +1.40T 96R 12/11  
 D/AV 17891M 3.8 686F 3.2 571P

### STILLMORE SAVAGE KITTEN

100118980  
 DHI  
 4-00 2 355 18160 4.0 732 3.5 629  
 5-01 2 348 18730 3.5 656 3.2 607  
 6-03 2 333 33958 4.4 1511 3.1 1049

NOM ALL-AMERICAN FALL CALF - 2000

### NEXT DAM: MILL-VALLEY NICOLE'S KESHIA

1017168 4-02 90

RES ALL-AMERICAN SR 3-YEAR-OLD - 2007  
 2ND 4-YEAR-OLD - 2008 MID-ATLANTIC NAT'L  
 1ST 5-YEAR-OLD - 2009 MID-ATLANTIC NAT'L  
 NOM ALL-AMERICAN 5-YEAR-OLD - 2009  
 1ST AGED COW - 2010 MID-ATLANTIC NAT'L  
 SR CHAMPION - 2010 MID-ATLANTIC NAT'L  
 GRAND CHAMPION - 2010 MID-ATLANTIC NAT'L  
 RES ALL-AMERICAN AGED COW - 2010

CONTACT US FOR EMBRYO AVAILABILITY

*Sunny Acres*

DOUG & KATHY EVANS & FAMILY

4106 Davenport Rd., Georgetown, NY 13072

315.837.4777 • Andrew Cell 315.750.0719 • Gregory Cell 315.456.8283

sunnyacresayrshires@gmail.com

# SUNNY-ACRES RATTLER'S KACIE

## EX-90



### SUNNY-ACRES RATTLER'S KACIE

PUREBRED AYRSHIRE 06/07/08 FEMALE  
 100536371 3-02 90 P5 +364  
 NM\$ +14  
 PTA +3.03SCC +1.2PL -0.4DPR  
 PTA -556M +7F -14P 49R  
 PTA\$ +14CY 12/11  
 PTA%  
 PTAT +1.20T +.16 +.02  
 PPA -1163M -8F -42P 53R 12/11  
 CLASS ST9 SR6 BD7 DF7 RAS RW7 LS6 FA6  
 FU8 UH8 UW7 UC6 UD7 TP7 TL3 LR6  
 GOLD % FAT % PRT  
 1-11 2 305 17680 3.8 674 3.1 546  
 321 18420 3.9 710 3.1 570

1ST SUMMER YRLG - 2009 MID-ATLANTIC  
 NAT'L

JR CHAMPION - 2009 MID-ATLANTIC NAT'L

1ST SUMMER YRLG - 2009 INTERNATIONAL

UNAN ALL-AMERICAN SUMMER YRLG - 2009

1ST JR 2 - 2010 MID-ATLANTIC NAT'L

1ST JR 2 - 2010 INTERNATIONAL

UNAN ALL-AMERICAN JR 2 - 2010

1ST JR 3 - 2011 MID-ATLANTIC NATIONAL

INT CHAMP - 2011 MID-ATLANTIC NAT'L

1ST JR 3 - 2011 INTERNATIONAL

### COVEY-P&A CONN RATTLER-ET

100463370  
 PTA +3.11SCC -0.2PL -1.2DPR  
 PTA -876M +40F -16P 78R  
 PTA\$ +.42 +.07  
 PTAT 54R 12/11  
 D/AV 20734M 4.2 878F 3.2 658P 8.4T

### STILLMORE BBBK KLASSY

100326965 5-10 94 2E  
 GOLD % FAT % PRT  
 2-10 2 293 17250 4.1 707 3.6 629  
 3-09 2 280 18470 4.0 733 3.5 647  
 4-09 2 315 19530 3.9 767 3.3 649  
 5-09 2 310 21430 4.1 870 3.3 712  
 6-09 2 365 28550 3.8 1078 3.5 1001  
 LIFE 1563 105230 3.9 4155 3.5 3638

NATIONAL SHOW & ALL-AMERICAN HONORS -  
 SEE PREVIOUS LISTING

### NEXT DAM:

### STILLMORE SAVAGE KITTEN

100118980  
 DHIR % FAT % PRT  
 DHI  
 4-00 2 355 18160 4.0 732 3.5 629  
 5-01 2 348 18730 3.5 656 3.2 607  
 6-03 2 333 33958 4.4 1511 3.1 1049

CONTACT US FOR MORE INFORMATION

*Sunny-Acres*

DOUG & KATHY EVANS & FAMILY

4106 Davenport Rd., Georgetown, NY 13072

315.837.4777 • Andrew Cell 315.750.0719 • Gregory Cell 315.456.8283

sunnyacresayrshires@gmail.com

# SUNNY-ACRES FINAL PREMIUM

## EX-93 2E



### SUNNY-ACRES FINAL PREMIUM

PUREBRED AYRSHIRE 07/19/05 FEMALE  
 100410895 5-05 93 2E P8 +363  
 NM\$ +62  
 PTA +3.01SCC +1.3PL +0.2DPR  
 PTA -299M -7F -5P 55R  
 PTA\$ +62CY 12/11  
 PTA% +.03 +.02  
 PTAT +.90T 47R 12/11  
 PPA -197M -8F +6P  
 CLASS ST9 SR7 BD7 DF7 RA6 RW8 LS6 FA8  
 FU8 UH8 UW7 UC7 UD4 TP7 TL6 LR8  
 GOLD % FAT % PRT  
 2-02 2 299 19890 3.9 770 3.3 665  
 3-02 2 296 16930 4.0 672 3.4 569  
 4-02 2 305 20390 3.9 805 3.3 677  
 331 21430 4.0 847 3.3 715  
 5-04 2 305 28010 3.6 1011 3.1 876

1ST AGED COW - 2011 MID-ATLANTIC NAT'L

CONTACT US FOR MORE INFORMATION

### ROSAYRE FINALIST

8447163C  
 PTAT +.40T 58R 12/11

### SUNNY-ACRES JERICHO'S PRINCESS

100305072 3-09 90  
 GOLD % FAT % PRT  
 2-07 2 299 14440 4.0 581 3.3 473  
 3-06 2 305 16490 4.0 654 3.5 575  
 306 16510 4.0 655 3.5 576  
 4-08 2 292 18880 4.2 801 3.4 636  
 5-08 2 305 17780 4.5 795 3.5 628  
 308 17830 4.5 797 3.5 630

2ND WI CALF - 2003 MID-ATLANTIC NAT'L  
 NOM ALL-AMERICAN WINTER CALF - 2003  
 1ST SR 3 - 2006 MID-ATLANTIC NATIONAL  
 HM ALL-AMERICAN SR 3 - 2006

### NEXT DAM:

### SUNNY-ACRES BONNIE PRINCESSE

1014891 4-06 87  
 GOLD % FAT % PRT  
 2-02 2 305 16160 4.1 657 3.3 527  
 309 16330 4.1 663 3.3 533  
 3-02 2 301 20050 4.4 877 3.4 678  
 4-03 2 305 21400 4.2 898 3.3 708  
 316 21740 4.2 911 3.3 719  
 5-03 2 305 22020 4.4 969 3.2 715  
 308 22080 4.4 972 3.2 717  
 6-05 2 285 22390 3.0 669 3.1 683  
 LIFE 1519 102590 4.0 4092 3.2 3330

*Sunny Acres*

DOUG & KATHY EVANS & FAMILY

4106 Davenport Rd., Georgetown, NY 13072

315.837.4777 • Andrew Cell 315.750.0719 • Gregory Cell 315.456.8283

sunnyacresayrshires@gmail.com



# SUNNY-ACRES JP GWYNETH

## EX-91 2E



### SUNNY-ACRES JP GWYNETH

PUREBRED AYRSHIRE 08/11/05 FEMALE  
 100414714 6-00 91 2E P6 +336  
 NM\$ +14  
 PTA +3.00SCC +1.7PL -0.8DPR  
 PTA +9M -1F -14P 56R  
 PTA\$ +14CY 12/11  
 PTA%  
 PTAT +.80T 56R 12/11  
 PPA -614M -19F -59P  
 CLASS ST8 SR6 BD8 DF8 RA7 RW6 LS4 FA6  
 FU8 UH8 UW7 UC8 UD4 TP8 TL4 LR4  
 GOLD % FAT % PRT  
 2-05 3 305 19340 3.8 744 2.8 551  
 365 22720 3.9 888 2.9 669  
 4-01 2 305 23930 4.1 993 2.9 695  
 365 27350 4.1 1120 3.0 808

2ND AGED COW - 2011 MID-ATLANTIC NAT'L

CONTACT US FOR MORE INFORMATION

### SUNNY-ACRES JURISPRUDENCE

100283741  
 PTA +2.90SCC +4.5PL -0.4DPR  
 PTA +238M +8F -3P 87R  
 PTA% -0.01 -0.06  
 PTAT +.80T 82R 12/11  
 D/AV 18187M 3.9 706F 3.1 560P 8.4T

### SUNNY-ACRES PROLY GLENDA

100039212 6-10 89  
 GOLD % FAT % PRT  
 5-00 2 219 8890 3.9 347 3.2 284  
 5-11 2 305 27140 3.6 970 2.9 779  
 365 29360 3.6 1052 2.9 857  
 7-05 2 305 24740 3.1 775 3.0 735

### NEXT DAM:

#### SUNNY-ACRES GLENDA KIN

991560 5-04 85  
 GOLD % FAT % PRT  
 2-02 2 305 12010 3.7 446 3.3 391  
 3-02 2 291 14170 3.8 537 3.5 493  
 4-01 2 289 18100 4.1 734 3.4 613  
 5-01 2 305 21190 3.8 808 3.5 744  
 306 21230 3.8 810 3.5 746  
 6-01 2 305 25390 3.5 887 3.4 851  
 LIFE 1722 104340 3.8 3932 3.4 3575

*Sunny Acres*

DOUG & KATHY EVANS & FAMILY

4106 Davenport Rd., Georgetown, NY 13072

315.837.4777 • Andrew Cell 315.750.0719 • Gregory Cell 315.456.8283

sunnyacresayrshires@gmail.com

# GATTON WILTON BRI-ET

## EX-93 2E



### GATTON WILTON BRI-ET

PUREBRED AYRSHIRE 01/05/05 FEMALE  
100386305

	5-11	93		2E P-	+394				
NMS	-3								
PTA	+3.06SCC	-1.4PL	-0.6DPR						
PTA	+221M	+4F	+17P		54R				
PTA\$	-3CY							8/11	
PTA%		-0.3	+0.5						
PTAT	+50T		49R					8/11	
PPA	+2532M	+67F	+103P						
CLASS	ST9	SR9	BD7	DF7	RA5	RW7	LS6	FA4	
	FU9	UH7	UW7	UC7	UD5	TP5	TL5	LR5	
GOLD									
2-01	2	305	16820	3.7	624	3.5	584		
		365	19560	3.8	744	3.5	692		
4-04	2	305	18160	4.0	723	3.3	601		
		365	21190	4.0	841	3.4	716		
5-08	2	305	22550	3.4	775	3.3	747		
		365	25660	3.5	900	3.4	861		

RES GRAND CHAMPION - 2007 SOUTHERN NAT'L JR  
 NOM JR ALL-AMERICAN SR 2 - 2007  
 GRAND CHAMPION - 2009 MID-ATLANTIC NAT'L JR  
 RES GRAND CHAMPION - 2009 INTERNAT'L JR  
 RES GRAND CHAMP - 2009 SOUTHERN NAT'L JR  
 NOM ALL-AMERICAN 4-YEAR-OLD - 2009  
 UNAN JR ALL-AMERICAN 4-YR-OLD - 2009  
 1ST 4 YR OLD, MID-ATLANTIC NAT'L  
 2ND 5-YR-OLD - 2010 SOUTHERN NAT'L  
 GRAND & SUPREME CHAMPION, 2011 MO STATE FAIR  
 3RD AGED COW, 2011 SOUTHERN NAT'L

### LABRIE WILTON-ET

10304106C

PTA	+3.25SCC	-2.5PL	-1.6DPR		
PTA	-53M	-13F	+11P		97R
PTA%		-0.6	+0.7		
PTAT	+70T		92R		8/11
D/AV	18577M	3.8	698F	3.2	595P 8.4T

### ROYALCROFT BRENDA MAE

100141890 6-02 93 2E

GOLD				%	FAT	%	PRT
6-02	2	298	15330	3.6	557	3.3	500
7-01	2	264	14790	3.2	471	3.3	490

MATERNAL SISTER TO BRENDAN AT SEMEX

### NEXT DAM:

#### ROYALCROFT BRENDA 3

2-03	2	305	14877	4.3	642	3.5	518
3-03	2	305	17275	4.2	723	3.6	626
4-04	2	305	17068	4.3	732	3.6	622
5-05	2	305	17269	4.1	705	3.5	604
6-06	2	302	19590	4.2	831	3.3	639
7-05	2	305	19295	4.0	774	3.5	675
8-07	2	305	19586	4.0	787	3.4	670
9-11	2	305	19229	4.2	807	3.4	655
11-00	2	305	20485	4.0	816	3.4	699
12-06	2	305	17236	4.1	703	3.5	597
LIFE	3047	18190	4.1	7520	3.5	6305	

BRI WAS THE AYRSHIRE DIVISION WINNER,  
 DAIRY AGENDA TODAY'S BRED & OWNED  
 CONTEST

*Still Dreamn Dairy*

BRETT & JESSICA GATTON DIXON

19220 Hwy J, Conway, MO

417.844.7217 • jessicagattondixon@live.com

# GATTON PADDY CHERRY

## EX-93 2E



### GATTON PADDY CHERRY

PUREBRED AYRSHIRE 07/24/04 FEMALE  
100373752

7-02 93 2E P9 +416

NMS	+218							
PTA	+2.82SCC	+2.1PL	+0.6DPR					
PTA	+536M	+15F	+15P	57R				
PTA\$	+218CY			12/11				
PTA%	-.03		-.01					
PTAT	+.80T		50R	12/11				
PPA	+3355M		+92F	+90P				
CLASS	ST8	SR7	BD9	DF8	RA5	RW6	L55	FA4
	FU9	UH8	UW8	UC7	UD4	TP6	TL4	LR5
GOLD			%	FAT	%	PRT		
2-01	2	304	17480	3.9	688	3.2	554	
3-01	2	305	16670	3.8	631	3.2	539	
			320	16910	3.8	639	3.2	548
4-01	2	305	19820	3.7	739	3.2	636	
5-01	2	305	19710	3.7	727	3.1	618	
			365	22010	3.7	813	3.1	689

3RD JR 3 - 2007 CENTRAL NAT'L  
1ST JR 3 - 2007 SOUTHERN NAT'L  
HM ALL-AMERICAN JR 3 - 2007  
1ST 4-YR-OLD - 2008 SOUTHERN NAT'L  
NOM ALL-AMERICAN 4-YEAR-OLD - 2008  
2ND 5-YR-OLD - 2009 MID-ATLANTIC NAT'L  
2ND 5-YR-OLD - 2009 SOUTHERN NAT'L  
NOM ALL-AMERICAN 5-YEAR-OLD - 2009  
2ND AGED COW - 2011 SOUTHERN NAT'L

### WOODLAND-VIEW PADDY 2-ET

10012065C			
PTA	+2.84SCC	+0.4PL	-1.2DPR
PTA	-131M	-4F	-1P 91R
PTA%			+0.2
PTAT	+.50T		77R 12/11
D/AV	17975M	3.8	685F 3.2 568P 8.4T

### SOUTHWOOD CHIPPER CINNAMON

100131268		3-01 84	
GOLD			FAT % PRT
2-04	2	305	14810 3.6 540 3.2 472
			343 16130 3.7 598 3.2 518
3-06	2	271	15700 3.9 611 3.1 479

### NEXT DAM:

ROYAL-R J.P. CHIPPER		100024238 5-01 88	
GOLD			FAT % PRT
2-03	2	291	15620 3.7 583 3.2 497
3-02	2	305	15450 3.8 584 3.2 501
			365 16470 3.8 627 3.3 541

NOM JR ALL-AMERICAN SR 2 - 2000

SEMEN IS AVAILABLE FROM CHERRY'S SON,  
GATTON CALIMERO CHARLIE VG85 @ 2-10

*Still Dreamn Dairy*  
**BRETT & JESSICA GATTON DIXON**  
19220 Hwy J, Conway, MO  
417.844.7217 • jessicagattondixon@live.com

# HARDY FARMS WILTON PUMPKIN

**EX-90**



**HARDY FARMS WILTON PUMPKIN**

PUREBRED AYRSHIRE 10/08/05 FEMALE  
 100426834 5-00 90 P- +379  
 NM\$ +8  
 PTA +3.04SCC +0.1PL -1.7DPR  
 PTA -144M +5F +1P 53R  
 PTA\$ +8CY 8/11  
 PTA%  
 PTAT +1.10T +.06 +.03 8/11  
 PPA -300M +70F +3P  
 CLASS ST9 SR6 BD6 DF8 RA5 RW8 LS4 FA4  
 FU8 UH9 UW8 UC7 UD6 TP7 TL6 LR5  
 3-00 2 288 10760 3.7 395 3.4 371  
 3-11 2 309 13670 5.0 686 3.3 454  
 4-11 2 298 15694 5.2 821 3.2 508

RES JUNIOR CHAMP - 2006 EASTERN STATES NAT'L JR  
 NOM JR ALL-AMERICAN FALL CALF - 2006  
 1ST SR 3-YEAR-OLD - 2009 SOUTHERN NATIONAL JR  
 2ND SR 3-YEAR-OLD - 2009 SOUTHERN NATIONAL  
 HM JR ALL-AMERICAN SR 3-YEAR-OLD - 2009

**LABRIE WILTON-ET**

10304106C  
 PTA +3.25SCC -2.5PL -1.6DPR  
 PTA -53M -13F +11P 97R  
 PTA% -06 +.07  
 PTAT +.70T 92R 8/11  
 D/AV 18577M 3.8 698F 3.2 595P 8.4T

**HARDY FARM OJ PATCH**

100101409 5-04 89  
 DHI % FAT % PRT  
 4-02 2 296 10920 3.9 426 3.4 372  
 5-03 2 305 11210 3.3 372 3.3 371  
 319 11450 3.3 379 3.3 380  
 6-03 2 285 10060 3.3 329 3.4 338  
 7-03 2 305 12690 3.6 457 3.2 411  
 319 13040 3.6 471 3.3 424  
 8-03 2 305 14250 3.7 526 3.3 469  
 331 14780 3.7 543 3.3 489  
 9-05 2 305 15630 3.5 543 3.0 475

**NEXT DAM: LANDSLIDE PATTI 9Z**

10-10 2 305 17450 4.5 778 3.1 533  
 316 17810 4.4 790 3.1 544

ORGANIC DAIRY

*Hardy Farm*

HENRY, TERESA, MARJORIE, ASHLIE, ANDREW & ASHLEY

360 Weeks Mills Rd.  
 Farmington, ME 04938  
 207.778.6446

# CONEBELLA SARGE'S WENDY

## EX-92



### CONEBELLA SARGE'S WENDY

PUREBRED AYRSHIRE 12/14/06 FEMALE  
 100476437 4-09 92 P5 +363  
 NM\$ +346  
 PTA +2.78SCC +3.4PL +1.2DPR  
 PTA +607M +28F +18P 55R  
 PTA\$ +346CY 8/11  
 PTA%  
 PPA +3597M +.02 -.01  
 +132F +104P  
 CLASS ST6 SR7 BD7 DF7 RA6 RW7 LS5 FA5  
 FU7 UH6 UW7 UC7 UD6 TP7 TL5 LR7  
 GOLD % FAT % PRT  
 2-01 2 305 19370 4.0 768 3.1 603  
 334 20820 4.0 833 3.1 652  
 3-02 2 305 23290 3.8 896 3.1 713  
 312 23570 3.9 908 3.1 723  
 4-02 2 218 18870 4.1 774 3.0 574  
 RIP

HM ALL-AMERICAN SR 2-YR-OLD - 2009  
 JR ALL-AMERICAN SR 2-YR-OLD - 2009  
 RES JR ALL-AMERICAN SR 3-YR-OLD - 2010

### MAPLE-DELL AVENGER SARGE-ET

100378412  
 PTA +2.62SCC +4.4PL +1.5DPR  
 PTA -623M -3F -15P 88R  
 PTA% +.12 +.03  
 PTAT +.80T 74R 8/11  
 D/AV 17489M 4.0 693F 3.2 554P 8.3T

### CONEBELLA HELIGO'S WILLOW

100112582 5-04 82  
 GOLD % FAT % PRT  
 3-03 2 305 23090 3.9 889 3.1 713  
 310 23360 3.9 900 3.1 722  
 4-02 2 305 23220 3.5 816 3.0 687  
 328 23640 3.5 837 3.0 704  
 5-03 2 305 23970 3.5 835 3.1 733  
 365 25740 3.5 900 3.1 795  
 6-06 2 305 22900 3.7 855 3.0 693  
 363 25250 3.7 938 3.1 778  
 7-08 2 275 17770 3.8 679 3.0 538  
 LIFE 2033 134990 3.8 5105 3.1 4159

### NEXT DAM: CONEBELLA MANDATE'S WILDA

3-03 2 305 20740 3.8 795 3.4 711

*Toppelen Farm*

KURT & RACHEL TOPP

TYLER, TESSA, TANNER, BRENNAN, MARISSA & LOGAN

3954 Congress Rd., Wooster, OH 44691

330.317.5363



# LONE-ELM BBBK MARBLE



## LONE-ELM BBBK MARBLE

PUREBRED AYRSHIRE 12/05/08 FEMALE  
100550548

P- +324

2-05 2 305 17930 ME

1ST SR 2-YEAR-OLD - 2011 MID-ATLANTIC  
NAT'L

## BLACKADDAR B B KELLOGG

777850C

PTA	+3.13	SCC	+2.1	PL	-0.1	DPR	
PTA	-735	M	-32	F	-14		97R
PTA%			-02		+05		
PTAT	+1.30	T			95R		8/11
D/AV	17869	M	3.8	685F	3.2	570P	

## LONE-ELM M.L. MARLA

100386976 5-11 90

DHI			%	FAT	%	PRT
2-02	2	305	11400	3.7	425	3.2 362
			347	12230	3.7	455 3.2 397
4-02	2	281	16610	3.4	558	3.2 531
5-06	2	251	11980	3.5	423	3.2 378

## NEXT DAM:

### LONE-ELM P.P. MALEAH, VG-86

DHI			%	FAT	%	PRT
7-03	2	305	16030	4.1	665	3.3 527
			326	16430	4.1	677 3.3 540

*Lone-Elm*

THE HOPPAUGHS

DAN, KIM, PAIGE & DANNY JR • 570.596.3008

JOANNE • 570.596.2532

1487 Little York Rd.

Columbia Cross Roads, PA 16914

# COVEY-FARMS FOREVER JADE

## EX-93 2E



### COVEY-FARMS FOREVER JADE

PUREBRED AYRSHIRE 09/10/00 FEMALE  
 100304923 7-02 93 2E P7 +419  
 NM\$ +260  
 PTA +2.86SCC +2.8PL +1.1DPR  
 PTA +741M +19F +16P 60R  
 PTA\$ +260CY 8/11  
 PTA%  
 PTAT +.70T .53R 8/11  
 PPA +2151M +65F +51P  
 CLASS ST9 SR7 BD9 DF9 RAS RW9 LS4 FA6  
 FU7 UH8 UW7 UC7 UD6 TP7 TL4 LR7  
**GOLD**  
 3-05 2 305 27580 3.3 917 2.9 789  
 365 31380 3.3 1038 2.9 909  
 4-08 2 305 25700 3.6 916 2.8 732  
 6-08 2 305 25310 3.5 893 2.8 711  
 365 29610 3.6 1053 2.8 836  
 LIFE 1577 114240 3.5 4044 2.9 3362

### COVEY-FARMS RENO FOREVER

100068034  
 PTAT +.70T 57R 8/11  
 D/AV OM OF 8.7T

### COVEY-FARMS SUMMIT JOCELIN

992618 6-02 86  
**GOLD**  
 3-04 0 305 21030 4.1 865 3.3 691  
 4-05 2 305 21280 3.5 749 3.3 704  
 365 24160 3.6 859 3.4 811  
 5-06 2 305 23330 3.3 778 3.3 766  
 343 25410 3.4 858 3.3 840  
 6-06 2 305 16980 3.8 653 3.5 595

2ND SR 3-YR-OLD - 2004 CENTRAL NAT'L  
 RES ALL-AMERICAN SR 3-YR-OLD - 2004  
 2ND 4-YR-OLD - 2005 CENTRAL NAT'L  
 RES ALL-AMERICAN 4-YR-OLD - 2005

CONTACT US FOR A COMPLETE LISTING OF  
 LIVE ANIMALS AND EMBRYOS AVAILABLE  
 FROM OUR EXTENSIVE FLUSH PROGRAM.



**TOM & SARA KRUSE  
 KALEB, COLE & CARTER**

1507 300th Ave., Dyersville, IA 52040

563.875.7495

Tom cell: 563.920.4901 • Sara cell: 563.920.6084

pandaayrshires@gmail.com

# SHAMROCK-HILLS SPLISHISH

VG-89



## SHAMROCK-HILLS SPLISHISH

95.37% AYRSHIRE 07/20/06 FEMALE  
100486470 95.37%  
3-02 89 P- +349

NMS	+49							
PTA	+2.98SCC	+1.1PL	+1.0DPR					
PTA	-436M	-1F	-12P	52R				
PTA\$	+49CY						8/11	
PTA%	+.09		+.01					
PPA	-1226M		-6F		-32P			
CLASS	ST6	SR6	BD7	DF7	RA5	RW7	LS6	FA7
	FU6	UH8	UW7	UC8	UD7	TP7	TL6	LR8
GOLD			%		FAT		%	
							PRT	
1-10	2	299	14590	4.3	634	3.2	473	
2-11	2	305	19070	3.7	706	3.1	593	
		365	21490	3.8	814	3.2	678	

1ST JR 2 - 2008 CENTRAL NAT'L JR  
JR ALL-AMERICAN JR 2 - 2008  
2ND JR 3 - 2009 INTERNATIONAL  
RES ALL-AMERICAN JR 3 - 2009  
RES JR ALL-AMERICAN JR 3 - 2009

## MARGOT CALIMERO

10310847C 90.75%  
PTA +3.01SCC +1.4PL +1.2DPR  
PTA +28M +14F +6P 94R  
PTA% +.07 +.03  
PTAT +1.10T 89R 8/11  
D/AV 19194M 3.9 750F 3.2 609P 8.5T

## SHAMROCK-HILLS SPLISH

100195509	5-05	91						
GOLD			%		FAT		%	
							PRT	
2-01	2	305	12700	4.4	558	3.1	397	
		334	13470	4.4	590	3.1	422	
3-03	2	285	13120	3.1	413	2.9	381	
4-03	2	278	13850	3.7	519	2.9	403	
5-03	2	305	16030	3.5	568	2.8	447	
		309	16140	3.5	572	2.8	450	
6-04	2	282	16080	4.0	646	3.1	498	

## NEXT DAM:

SHAMROCK-HILLS SPLASH, VG-85

CONTACT US FOR A COMPLETE LISTING OF  
LIVE ANIMALS AND EMBRYOS AVAILABLE  
FROM OUR EXTENSIVE FLUSH PROGRAM.



TOM & SARA KRUSE  
KALEB, COLE & CARTER  
1507 300th Ave., Dyersville, IA 52040  
563.875.7495

Tom cell: 563.920.4901 • Sara cell: 563.920.6084  
pandaayrshires@gmail.com

# BAR-VUE BBK GOLDY-ET

## EX-91



### BAR-VUE BBK GOLDY-ET

PUREBRED AYRSHIRE 03/17/07 FEMALE  
 62885457 3-08 91 P5 +359  
 GOLD % FAT % PRT  
 2-01 2 305 15310 4.2 647 3.1 467  
 365 17470 4.3 745 3.1 544  
 3-03 2 305 16260 4.0 652 3.4 550  
 315 16530 4.0 666 3.4 560

3RD SPRING YRLG - 2008 CENTRAL NAT'L  
 2ND JR 2 - 2009 INTERNATIONAL  
 RES ALL-AMERICAN JR 2 - 2009  
 2ND JR 3 - 2010 INTERNATIONAL  
 HM ALL-AMERICAN JR 3 - 2010

CONTACT US FOR A COMPLETE LISTING OF  
 LIVE ANIMALS AND EMBRYOS AVAILABLE  
 FROM OUR EXTENSIVE FLUSH PROGRAM.

### BLACKADDAR B B KELLOGG

777850C  
 PTA +3.13SCC +2.1PL -0.1DPR  
 PTA -735M -32F -14P 97R  
 PTA% -02 +.05  
 PTAT +1.30T 95R 8/11  
 D/AV 17869M 3.8 685F 3.2 570P

### BAR-VUE TEST DOLLAR

100406746 5-01 85

### NEXT DAM: BAR-VUE BATTLE PENNY

100277672 7-08 91 2E  
 DHI % FAT % PRT  
 2-07 2 305 20060 3.9 792 2.9 575  
 3-08 2 305 17990 4.4 785 3.1 551  
 4-10 2 305 21020 4.2 886 3.0 623  
 6-10 2 305 31810 4.2 1346 3.0 963  
 LIFE 1680 110450 4.2 4642 3.1 3385

WINNER OF 2010 AYRSHIRE TROPHY &  
 TOTAL PERFORMANCE AWARD



TOM & SARA KRUSE  
 KALEB, COLE & CARTER  
 1507 300th Ave., Dyersville, IA 52040  
 563.875.7495

Tom cell: 563.920.4901 • Sara cell: 563.920.6084  
 pandaayrshires@gmail.com

# SPRING-RUN BURDETTE BESSY

## EX-90



### SPRING-RUN BURDETTE BESSY

PUREBRED AYRSHIRE 08/16/08 FEMALE  
 100548811 2-11 90 P9 +454  
 NM\$ +355  
 PTA +2.88SCC +3.7PL +1.0DPR  
 PTA +544M +20F +23P 44R  
 PTA\$ +355CY 8/11  
 PTA%  
 PTAT +1.30T +.03  
 PPA +2013M +89F 43R 8/11  
 CLASS ST8 SR7 BD8 DF7 RA4 RW5 LS5 FA7  
 FU7 UH6 UW7 UC6 UD6 TP7 TL8 LR7  
 DHI % FAT % PRT  
 2-00 2 282 16380 4.0 657 3.4 565  
 ME 22046 3.9 856 3.3 735  
 2-10 2 ME 19567 3.5 681 3.0 585

### PALMYRA TRI-STAR BURDETTE-ET

100419568  
 PTA +2.73SCC +4.6PL +1.2DPR  
 PTA +636M +22F +25P 93R  
 PTA% -.01 +.03  
 PTAT +2.00T 85R 8/11  
 D/AV 19351M 3.9 748F 3.2 611P 8.4T

### SPRING-RUN GUY BONET

100406296

### NEXT DAM: SPRING-RUN BARON BONI

2-10 2 365 19300 3.9 749 3.2 622  
 4-00 2 306 18020 3.8 693 3.2 575

RANKED #61 AUGUST 2011 HIGH CPI LIST

*Spring-Run Farm*  
 TOM & VIVIAN WOLF & FAMILY  
 5729 Brown Road  
 Shreve, OH 44676  
 330.567.3486



# VAN-DE ORKKO CAITLIN CORKY

## VG-88



### VAN-DE ORKKO CAITLIN CORKY

95% AYRSHIRE 04/21/08 FEMALE 95%  
 100545377 3-04 88 ELITE P9 +467

NMS	+441							
PTA	+2.87	SCC	+3.3	P	+2.4	DPR		
PTA	+1039M		+37F		+37P		49R	
PTA\$	+441CY						8/11	
PTA%			-.02		+.02			
PTAT	+.30T				38R		8/11	
PPA	+2706M		+95F		+95P			
CLASS	ST8	SR6	BD7	DF7	RA5	RW7	L55	FA6
	FU7	UH7	UW7	UC9	UD7	TP6	TL5	LR7
DHI				%	FAT	%	PRT	
1-11	2	305	22970	3.9	903	3.2	729	
		349	26100	3.9	1014	3.2	834	
3-01	PROJ		21674	3.6	813	2.9	665	

NOM ALL-AMERICAN JR 2-YEAR-OLD - 2010  
 ALL-WISCONSIN JR 2-YEAR-OLD, 2010  
 ALL-WISCONSIN JR 3-YEAR-OLD, 2011

BRED TO BERKLEY

EMBRYOS BY BURDETTE & REALITY  
 DAUGHTER BY OBLIQUE

### PUROLAN ORKKO FI

41531C 90%  
 PTA +2.69SCC +3.7PL +2.9DPR  
 PTA +1087M +34F +53P 96R  
 PTA% -0.04 +.10  
 PTAT -.40T 70R 8/11  
 D/AV 23704M 3.8 896F 3.2 752P 8.2T

### S&M-AYR TRIDENT CHERRY CAITLYN

100191064 4-00 90  
 GOLD % FAT % PRT  
 1-11 2 304 18830 3.8 707 2.9 541  
 2-11 2 305 18860 3.6 684 2.9 555  
 330 19630 3.6 716 3.0 583  
 7-01 2 305 19560 3.8 734 2.8 540  
 365 21160 3.7 792 2.8 592  
 3-11 2 305 21600 4.0 857 3.0 645  
 345 22290 4.0 889 3.0 669  
 5-00 2 305 20330 4.0 806 2.9 587  
 350 21560 4.0 862 2.9 629  
 6-02 2 305 22480 3.7 824 2.7 617  
 307 22560 3.7 827 2.7 619  
 LIFE 2024 126490 3.8 4810 2.9 3649

### NEXT DAM: S&M-AYR BOYS CHERRY, VG-89

GOLD % FAT % PRT  
 3-03 2 305 17140 4.2 712 3.2 549  
 312 17330 4.2 722 3.2 556

7 Oaks Dairy

MARGARET HAZELTINE

ROBERT & TIFFANY HAZELTINE & FAMILY

2828 Kessler Road

Janesville, WI 53548

608.756.2913

# VAN-DE T-STAR CONNIE CONSTANCE

## EX-90



### VAN-DE T-STAR CONNIE CONSTANCE

PUREBRED AYRSHIRE 11/07/05 FEMALE  
 100433847 5-02 90 P9 +448  
 NM\$ +282  
 PTA +2.93SCC +1.8PL +0.5DPR  
 PTA +861M +34F +25P 59R  
 PTA\$ +282CY 8/11  
 PTA%  
 PTAT +.70T 54R 8/11  
 PPA +2135M +80F +69P  
 CLASS ST9 SR6 BD5 DF7 RA7 RW7 LS6 FA7  
 FUG UH7 UW7 UC7 UD5 TP5 TL8 LR5  
 DHI % FAT % PRT  
 2-01 2 305 14220 4.1 583 3.2 456  
 306 14230 4.1 583 3.2 457  
 3-01 2 292 15830 4.1 642 3.4 540  
 5-01 PROJ 32969 3.7 1212 3.0 1033

### DAUGHTER:

**VAN-DE ORKKO CONSTANCE OLYMPIA**  
 VG-89 @ 2-09  
 2-02 PROJ 19633 3.8 759 3.4 682  
 RANKED #45 AUGUST 2011 HIGH CPI LIST

BRED TO BERKLEY  
 RANKED #78 APRIL 2011 HIGH CPI LIST  
 RANKED #122 AUGUST 2011 HIGH CPI LIST

### PALMYRA TRI-STAR

150440  
 PTA +2.81SCC +0.3PL -0.3DPR  
 PTA +468M +18F +14P 96R  
 PTAT +.90T 93R 8/11  
 D/AV 18977M 3.9 734F 3.1 593P 8.4T

### VAN-DE CORNELIUS MARY CONNIE

100169557 5-03 88  
 GOLD % FAT % PRT  
 1-09 2 305 16490 4.0 661 3.2 524  
 312 16820 4.0 675 3.2 534  
 2-10 2 305 19100 4.2 796 3.0 576  
 313 19270 4.2 805 3.0 583  
 3-09 2 305 19730 4.2 834 3.1 605  
 365 22730 4.2 962 3.1 700  
 5-00 2 294 21090 4.1 870 2.9 619  
 5-11 2 305 23690 3.9 927 3.0 702  
 337 25020 3.9 980 3.0 742  
 7-00 2 304 19060 3.9 737 3.0 579  
 LIFE 2163 138590 4.1 5614 3.0 4188

### NEXT DAM:

### WENTWORTH-FARM MARY KATE, VG-86

GOLD % FAT % PRT  
 3-00 2 305 16990 4.0 685 3.1 531  
 4-02 2 305 21690 3.7 811 2.9 633  
 5-05 2 305 20630 4.1 854 3.0 618  
 320 21090 4.2 876 3.0 635

*7 Oaks Dairy*

**MARGARET HAZELTINE**

**ROBERT & TIFFANY HAZELTINE & FAMILY**

2828 Kessler Road

Janesville, WI 53548

608.756.2913

# PALMYRA POKER GIGI-ET

## VG-88



### PALMYRA POKER GIGI-ET

PUREBRED AYRSHIRE 12/29/07 FEMALE  
 65459562 3-08 88 P9 +454

NM\$	+343							
PTA	+2.86SCC	+3.9PL	-0.4DPR					
PTA	+916M	+36F	+19P	50R				
PTA\$	+343CY			8/11				
PTA%			-.05					
PTAT	+1.40T		48R	8/11				
PPA	+2163M	+90F	+45P					
CLASS	ST9 SR7 BD7 DF7 RA6 RW7 LSS FA7							
	FUG UH7 UW6 UC7 UD7 TP7 TL4 LR7							
GOLD		%	FAT %	PRT				
2-03	2 305 19810 4.3		850 3.1	605				
	358 22110 4.3		951 3.1	682				
3-05	PROJ 20213 3.2		663 2.6	558				

1ST SR 2 - 2010 MID-ATLANTIC NATIONAL  
 NOM ALL-AMERICAN SR 2-YEAR-OLD - 2010

BRED TO NEXUS DREAMER

RANKED #61 AUGUST 2011 HIGH CPI LIST

EMBRYOS AVAILABLE BY  
 DREAMER & BURDETTE

### DES CHAMOIS POKER-ET

8401621C  
 PTA +2.89SCC +2.4PL  
 PTA +79M +15F -1P 94R  
 PTA% +.07 -.02 87R 8/11  
 PTAT +1.30T  
 D/AV 19893M 3.9 780F 3.1 621P 8.5T

### PALMYRA RAVEN S. GINGER

100330199	6-03 89	ELITE		
1-11	2 365 27710 3.0	841 3.0	842	
3-04	2 334 23170 3.2	749 3.0	701	
4-06	2 365 35760 4.5	1626 2.9	1052	
5-11	2 365 22720 4.0	899 2.9	670	
LIFE	1686 119023 3.7	4446 3.0	3584	

ALL-AMERICAN FALL CALF - 2004  
 UNAN ALL-AMERICAN YRLG IN MILK - 2005  
 UNAN JR ALL-AMERICAN YRLG IN MILK - 2005

### NEXT DAM: PALMYRA SATELLITE L GINGER

100164712	4-10 86			
GOLD	%	FAT %	PRT	
2-00	2 303 20350 3.8	771 3.1	636	
2-11	2 303 15310 3.5	543 3.0	464	
3-11	2 365 20860 3.9	804 3.1	648	
5-01	2 299 23620 3.6	844 3.0	715	
6-00	2 298 25100 3.1	789 2.9	731	
LIFE	1569 105260 3.6	3752 3.0	3195	

*7 Oaks Dairy*  
**MARGARET HAZELTINE**  
**ROBERT & TIFFANY HAZELTINE & FAMILY**  
 2828 Kessler Road  
 Janesville, WI 53548  
 608.756.2913

# VAN-DE CONN CRICKET FIREFLY

## EX-91



### VAN-DE CONN CRICKET FIREFLY

94.43% AYRSHIRE 06/13/06 FEMALE  
 100524635 94.43%  
 5-03 91 ELITE P5 +446

NM\$ +366  
 PTA +3.05SCC +2.4PL -0.2DPR  
 PTA +1080M +54F +38P 56R  
 PTA\$ +366CY 8/11  
 PTA% +.06 +.02  
 PPA +3493M +129F +113P

CLASS	ST8	SR6	BD6	DF8	RA5	RW5	LS6	FA8
	FU8	UH9	UW7	UC9	UD6	TP5	TL5	LR9
DHI			%	FAT	%	PRT		
1-11	2	305	17150	4.0	685	3.1	535	
		325	18230	4.0	732	3.1	572	
2-11	2	276	18040	4.2	765	3.3	593	
3-10	2	305	28320	3.7	1041	3.2	910	
5-11		PROJ	21252	3.4	720	2.8	631	

### SHADY WALNUT CONN

10304939C  
 PTA +3.08SCC -0.1PL -1.6DPR  
 PTA +36M +28F +3P 96R  
 PTA\$ +.15 +.01  
 PTAT -.30T 92R 8/11  
 D/AV 19472M 4.0 782F 3.1 613P 8.2T

### VAN-DE JERRY K-T-DID CRICKET

100430983 88.87%

	5-08	92	2E	ELITE	
DHI			%	FAT	%
1-09	2	305	19630	3.7	726
		365	23330	3.8	881
3-02	2	305	21650	4.1	891
		326	22710	4.2	943
4-02	2	305	22350	3.9	875
		311	22660	3.9	889
5-02	2	341	28640	4.1	1176
LIFE	1453	103280	4.0	4145	3.4

RANKED #36 APRIL 2011 HIGH NM LIST

PLANNED FLUSHES TO BURDETTE, BERKLEY,  
 KANSAS & NEXUS DREAMER

RANKED #2 APRIL 2011 HIGH CPI LIST

RANKED #4 AUGUST 2011 HIGH CPI LIST

### NEXT DAM:

### VAN-DE TBRUNO CANDIDA K-T-DID, VG-86

DHI			%	FAT	%	PRT
5-02	2	305	20270	4.3	875	3.4
		319	20850	4.3	902	3.4

*7 Oaks Dairy*  
**MARGARET HAZELTINE**  
**ROBERT & TIFFANY HAZELTINE & FAMILY**  
 2828 Kessler Road  
 Janesville, WI 53548  
 608.756.2913

# 7 OAKS HL RAMIUS JOLENE



## 7 OAKS HL RAMIUS JOLENE

PUREBRED AYRSHIRE 03/02/10 FEMALE  
66804418

3RD SPRING YRLG - 2011 SOUTHERN NAT'L

## GALNEY-EPC GALANT RAMIUS

100216624  
PTA +3.45SCC +1.8PL +1.1DPR  
PTA +180M +5F +6P 92R  
PTA% -01  
PTAT +1.40T 87R 12/11  
D/AV 18877M 3.9 730F 3.1 591P 8.4T

## HI-AYR-VIEW MASTERPIECE JUJU

100459089 4-04 90  
GOLD % FAT % PRT  
3-09 2 296 18420 4.0 734 2.9 528

3RD 4-YR-OLD - 2010 CENTRAL NAT'L JR  
HM JR ALL-AMERICAN 4-YR-OLD - 2010  
2ND 5-YR-OLD - 2011 CENTRAL NAT'L JR

## NEXT DAM:

BV AYR KELLY JELLYBEAN, VG-86

---

*7 Oaks Dairy*  
MARGARET HAZELTINE  
ROBERT & TIFFANY HAZELTINE & FAMILY  
2828 Kessler Road  
Janesville, WI 53548  
608.756.2913



# TOLL-GATE BBBK SAVANNAH-ET

## VG-85



### TOLL-GATE BBBK SAVANNAH-ET

PUREBRED AYRSHIRE 09/24/06 FEMALE  
100477531

	4-06	85		P-	+320			
NM\$	+14							
PTA	+3.06	SCC +3.0	PL -0.2	DPR				
PTA	-434M	-18F	-17P	52R				
PTA\$	+14CY			8/11				
PTA%		-.01	-.02					
PPA	-636M	-11F	-30P					
CLASS	ST8	SR5	BD6	DF5	RA5	RW6	LS6	FA4
	FU8	UH6	UW5	UC6	UD9	TP5	TL4	LR6
DHI			%	FAT	%	PRT		
	3-05	2	305	20600	4.3	892	2.9	607

RES ALL-AMERICAN SR 3-YEAR-OLD - 2010  
2ND SR 3 & RES INT CHAMP, ALL-WI 2010

DUE IN FEBRUARY TO OBLIQUE

OWNED BY MORT O'LEARY  
HOUSED AT 7 OAKS DAIRY

### BLACKADDAR B B KELLOGG

777850C  
PTA +3.13 SCC +2.1 PL -0.1 DPR  
PTA -735M -32F -14P 97R  
PTA\$ -0.02 +.05  
PTAT +1.30T 95R 8/11  
D/AV 17869M 3.8 685F 3.2 570P

### TOLL-GATE BRENDAN'S SELMA

100176841	6-03	91		2E	
GOLD		%	FAT	%	PRT
2-07	2	305	16250	4.0	643 2.9 471
		308	16380	4.0	648 2.9 475
3-08	2	288	16990	4.0	684 2.8 479
4-08	2	305	18040	3.9	709 2.9 519
		338	19120	3.9	754 2.9 554
6-00	2	305	22180	3.5	771 2.8 630

NOM ALL-AMERICAN WINTER YRLG - 2002

### NEXT DAM:

#### TOLL-GATE MOZART'S SARAH, EX-93

GOLD		%	FAT	%	PRT
3-04	2	305	18270	4.2	767 3.1 564
		339	20100	4.3	856 3.1 623
4-05	2	305	20820	3.8	800 3.0 633
5-10	2	305	20890	4.0	834 3.0 626
7-08	2	305	20720	4.2	878 2.7 567
LIFE	2217	122090	4.1	5023	3.0 3694

*7 Oaks Dairy*  
MARGARET HAZELTINE  
ROBERT & TIFFANY HAZELTINE & FAMILY  
2828 Kessler Road  
Janesville, WI 53548  
608.756.2913

# 7 OAKS HL BBBK KELLOGG EMMA-ET

## VG-87



### 7OAKS HL BBBK KELLOGG EMMA-ET

PUREBRED AYRSHIRE 12/02/06 FEMALE  
100487248

2-09 87 P- +366

NM\$	+51			
PTA	+2.98SCC	+1.4PL	+0.3DPR	
PTA	-202M	-13F	-2P	52R
PTA\$	+51CY			8/11
PTA%	-.03			+0.02
PTAT	+.90T			43R 8/11
PPA	+386M			+19F +30P
CLASS	ST7	SR6	BD7	DF8 RA7 RW7 LS6 FA7
	FU8	UH7	UW7	UC8 UD8 TP6 TL5 LR8
DHI				% FAT % PRT
2-07	2	267	15640	3.5 549 3.4 529
3-06	2	301	19660	3.6 702 3.3 655

1ST SR 2 & HM CHAMP, 2009 ALL WI  
3RD SR 2 - 2009 INTERNATIONAL JR  
1ST SR 2 - 2009 SOUTHERN NATIONAL JR  
3RD SR 2 - 2009 SOUTHERN NATIONAL  
NOM JR ALL-AMERICAN SR 2 - 2009

### BLACKADDAR B B KELLOGG

777850C  
PTA +3.13SCC +2.1PL -0.1DPR  
PTA -735M -32F -14P 97R  
PTA% -0.02 +.05  
PTAT +1.30T 95R 8/11  
D/AV 17869M 3.8 685F 3.2 570P

### ROSE-VALLEY ADMIRAL ELEGANT

100148561 7-02 90

DHI				%	FAT %	PRT
3-04	2	305	20660	3.6	739 3.0	622
		336	21350	3.6	767 3.0	646
4-05	2	305	20530	3.9	799 3.1	635
		314	20640	3.9	804 3.1	639
5-06	2	305	19150	3.6	680 3.0	580
6-10	2	279	21130	3.5	749 2.9	617
7-10	2	305	21830	3.6	792 3.1	668
LIFE	1954	125120	3.6	4525	3.1	3817

PLANNED FLUSH TO REALITY

SEPTEMBER DAUGHTER BY  
DES CHAMOI\$ PRESTIGE

*7 Oaks Dairy*  
MARGARET HAZELTINE  
ROBERT & TIFFANY HAZELTINE & FAMILY  
2828 Kessler Road  
Janesville, WI 53548  
608.756.2913

# GRAND-VIEW SAKIC DANZA

## EX-90



### GRAND-VIEW SAKIC DANZA

PUREBRED AYRSHIRE 10/08/05 FEMALE

100420119

3-10 90

P6 +312

NM\$	-122								
PTA	+2.97SCC	-0.2PL	+0.9DPR						
PTA	-820M	-24F	-23P	53R					
PTA\$	-122CY			8/11					
PTA%		+0.04	+0.02						
PTAT			41R	8/11					
PPA	+0.80T		-5P						
PPA	-241M	+7F							
CLASS	ST9	SR8	BD8	DF7	RA6	RW8	L55	FA7	
	FU5	UH8	UW6	UC7	UD5	TP5	TL6	LR7	
DHI				%	FAT	%	PRT		
2-06	2	305	18940	4.0	756	3.1	584		
		346	22100	4.0	880	3.1	680		
3-07	2	218	13400	3.5	467	3.0	405		
5-07		ME	20068	4.2	843	3.6	722		

### BONNIE BRAE SAKIC-ET

8370322C

PTA	+3.05SCC	-3.6PL	+0.9DPR		
PTA	-1496M	-38F	-37P	82R	
PTA%		+0.12	+0.06		
PTAT			72R	8/11	
D/AV	17931M	3.9	708F	3.2	572P 8.3T

### GRAND-VIEW PADDY DECEMBER

100197592

6-08 90

GOLD				%	FAT	%	PRT
2-02	2	295	14030	4.1	570	3.0	420
3-02	2	305	15480	4.0	619	3.0	470
		365	18230	4.1	745	3.1	558
4-04	2	270	14990	3.7	559	3.0	456
5-03	2	305	15060	4.2	634	3.2	482
		311	15210	4.2	640	3.2	488
6-04	2	305	20540	3.9	796	3.1	641

### DAUGHTER:

**MACKINSON JACKSON DARCY-ET**

JR CHAMPION, 2011 MID-ATLANTIC NAT'L JR SHOW

### NEXT DAM:

**GRAND-VIEW OLY 2 DIVA, EX-90 2E**

LIFE 3232 192640 4.1 7877 3.0 5695

8TH GENERATION EXCELLENT

DAUGHTERS BY CONN, JACKSON & OBLIQUE

EMBRYOS BY JACKSON, OBLIQUE & CALIMERO

WILL BE FLUSHED WINTER 2011/2012

*Mackinson Dairy Farm*

MATTHEW MACKINSON

MARY MACKINSON FABER

17427 E 2125 N Rd.

Pontiac, IL 61764

815.842.2692

# GRAND-VIEW BBBK DREAMER

## EX-93 2E



### GRAND-VIEW BBBK DREAMER

PUREBRED AYRSHIRE 09/11/06 FEMALE  
100463697

3-08 91 P5 +348

NM\$	+51							
PTA	+3.16SCC	+3.8PL	+0.5DPR					
PTA	-707M	-25F	-15P	52R				
PTA\$	+51CY			8/11				
PTA%	+0.01			+0.04				
PTAT	+1.60T		58R	8/11				
PPA	-2845M	-90F	-62P					
CLASS	ST8	SR7	BD7	DF7	RA6	RW9	L55	FA7
	FU8	UH8	UW8	UC9	UD7	TP8	TL6	LR9
GOLD				%	FAT	%	PRT	
2-06	2	305	14610	4.4	646	3.3	489	
		334	15770	4.5	702	3.4	531	
3-06	2	305	16510	3.6	598	3.3	541	
		364	17560	3.6	640	3.3	581	

3RD FALL YEARLING - 2008 CENTRAL NATIONAL

HM ALL-AMERICAN FALL YEARLING - 2008 FUTURETY WINNER, 2010 WORLD DAIRY EXPO

5TH SR 3-YEAR-OLD, 2010 INTERNAT'L SHOW AT WORLD DAIRY EXPO

### DAUGHTER:

**GRAND-VIEW BURDETTE DIAMOND, VG-86**  
HM ALL-AMERICAN SPRING YRLG, 2010

### BLACKADDAR B B KELLOGG

777850C

PTA	+3.13SCC	+2.1PL	-0.1DPR	
PTA	-735M	-32F	-14P	97R
PTA\$	-.02			+0.05
PTAT	+1.30T		95R	8/11
D/AV	17869M	3.8	685F	3.2 570P

### GRAND-VIEW CORNELIUS DRAMA

100261866

		7-02 91							
GOLD				%	FAT	%	PRT		
2-03	2	236	12810	4.1	522	3.1	399		
		305	16220	4.1	668	3.2	511		
		312	16510	4.1	680	3.2	521		
3-03	2	268	13910	4.0	554	3.2	447		
4-03	2	305	17950	4.0	715	3.2	570		
5-06	2	305	21160	4.0	837	3.1	660		
		314	21560	4.0	856	3.1	674		
6-06	2	279	21450	4.0	857	3.0	654		

### NEXT DAM: GRAND-VIEW OLY 2 DIVA, EX-90 2E

LIFE 3232 192640 4.1 7877 3.0 5695

### 8TH GENERATION EXCELLENT

DAUGHTERS BY BURDETTE, CALIMERO, DEMOCRAT, PARDNER & BENEVOLA

PREGNANCIES BY CALIMERO & BURDETTE

EMBRYOS AVAILABLE BY PARDNER & CALIMERO

EMBRYOS EXPORTED

*Grand-View Ayrshires*

TIM & KATIE BUSCH

N6470 County Road C

Cecil, WI 54111

920.609.7476

tb1972@frontiernet.net

# VALLEY-VIEW WILTON SHOBO DOLLEE



**VALLEY-VIEW WILTON SHOBO DOLLEE**

PUREBRED AYRSHIRE 05/17/08 FEMALE  
 100620304  
 2-11 2 ME 20125 3.7 744 3.1 633

2ND & 2ND BU JR 3, 2011 IA STATE FAIR

**VALLEY-VIEW WILTON SHOBO**

100459472  
 SHOBO'S DAM:  
 VALLEY-VIEW PATRICK SHORTEE-ET  
 EX-91 3E  
 LIFE: 2860D 176,640M 6044F 5715P

**6TH DAM:**

**VALLEY-VIEW TOPHAT DISA**  
 LIFE 140612M 5498F

**7TH DAM:**

**IO-WAYSIDE WELCOME'S DINA**  
 OUR FIRST AYRSHIRE

**SAME MATERNAL FAMILY:**

**VALLEY-VIEW AL'S DUON, EX-93 3E**  
 LIFE 180,422M 6920F 5798F

**VALLEY-VIEW SURVIVOR DICKEE**

100462539 6-00 89  
 NM\$ -299  
 PTA +3.06SCC -2.6PL +0.8DPR  
 PTA -776M -37F -30P 44R  
 PTA\$ -299CY 8/11  
 PTA% -.04 -.04  
 PTAT -.40T 30R 8/11  
 PPA -1573M -85F -51P  
 CLASS ST8 SR7 BD8 DF8 RA6 RW8 LS7 FA6  
 FUG UH7 UW7 UC7 UD5 TP5 TL6 LR7  
 GOLD % FAT % PRT  
 2-03 2 305 11930 4.2 498 3.5 422  
 3-07 2 305 19390 3.6 707 3.2 623  
 5-04 2 305 16420 3.2 519 3.1 511  
 7-01 2 305 18400 3.0 556 3.2 596  
 348 19900 3.1 622 3.3 655  
 8-03 2 203 14810 3.2 475 3.2 475  
 LIFE 90785 3163 3020

---

*Valley View Ayrshires*  
**WENDELL & ELAINE LUNS福德**  
 2718 Sassafras Blvd.  
 Stockport, IA 52651  
 319.796.4672  
 llayr@netins.net



# R-LYN TRIDENT JODEE

## EX-93 3E



### R-LYN TRIDENT JODEE

PUREBRED AYRSHIRE 03/02/01 FEMALE  
100193600

	9-01	93		3E P-	+384				
NM\$	+33								
PTA	+3.04SCC			-0.3DPR					
PTA	+124M	+16F		+9P	62R				
PTA\$	+33CY				12/11				
PTA%		+0.06		+0.03					
PTAT	+0.50T			63R	12/11				
PPA	+1063M	+81F		+46P					
CLASS	ST9	SR7	BD9	DF9	RA5	RW7	LS6	FA5	
	FUG	UH7	UW6	UC7	UD4	TP6	TL7	LR7	
GOLD				%	FAT	%	PRT		
2-01	2	305	17960	4.1	728	3.4	619		
		365	21790	4.2	923	3.5	761		
3-05	2	305	13290	4.5	600	3.4	446		
		345	14630	4.6	669	3.4	496		
4-05	2	305	19390	4.2	821	3.3	638		
		311	19660	4.2	835	3.3	648		
5-05	2	305	19210	4.3	828	3.3	627		
		319	19400	4.3	833	3.3	634		
6-07	2	305	19200	4.6	886	3.3	643		
		310	19370	4.6	893	3.4	649		
7-07	2	305	24210	3.9	940	3.2	767		
		365	26300	3.9	1029	3.2	837		
9-00	2	305							
		364	26180	4.1	1063	3.1	810		
LIFE	2534	152950	4.3	6534	3.3	5043			

### ARDOSSAN EV KATES TRIDENT \*TF

144136	12-03	95	EEEE		
PTA	+3.13SCC	-1.2PL		-1.4DPR	
PTA	+42M	+16F		+9P	99R
PTA%		+0.08		+0.04	
PTAT	+0.80T			98R	12/11
D/AV	18224M	3.9	709F	3.2	577P 8.3T

### R-LYN RELIABLE JESSICA

1004828					
1-08	268	10690	4.2	454	3.3 352
2-07	2 246	11630	4.2	490	3.1 366
	288	12620	4.3	544	3.2 406
3-06	2 305	15550	4.6	709	3.2 505
	309	15610	4.6	712	3.2 507
4-06	2 305	15740	4.4	689	3.1 491
	333	16100	4.4	704	3.1 504

### JODEE'S DAUGHTERS:

#### STAR BY MIRAL SUPER STAR 15M, VG

- GRANDDAUGHTER BY SAKIC, VG
- GREAT-GRANDDAUGHTER BY BLUE SKY, 3RD FALL YRLG, MID-ATLANTIC NAT'L

#### DREAM BY PALMYRA RIPKEN CHASE, VG

- POKER DAUGHTER IS DUE 6/12 TO NEXUS DREAMER

#### JOLLY DEE BY MAPLE-DELL MODEM DIEGO

- DUE 3/12 TO POKER

#### TESS BY MOWRY'S MODEM PYRENES-ET

- OUT OF PLUM-BOTTOM SOLDIER PERSIPHENE, EX-91

*R-Lyn Farm*

ROBERT & SHERRIE DOODY

11530 Cash Smith Road

Keymar, MD 21757

(301) 845-2829 • Sherrie Cell (301) 471-7631 • Robert Cell (301) 471-7716

rlynnfarm@aol.com

# ALL-STAR TILLIE



## ALL-STAR TILLIE

PUREBRED AYRSHIRE 12/01/09 FEMALE  
100585571 P- +320

1ST WI CALF - 2010 MID-ATLANTIC NAT'L  
JR CHAMPION - 2010 MID-ATLANTIC NAT'L  
1ST WI CALF - 2010 INTERNATIONAL  
ALL-AMERICAN WINTER CALF - 2010  
1ST WI YRLG - 2011 CENTRAL NAT'L JR  
1ST WI YRLG - 2011 SOUTHERN NAT'L JR  
1ST WI YRLG - 2011 SOUTHERN NAT'L

DUE MARCH 2012 TO DES CHAMOIS POKER-  
ET. WATCH FOR MORE ON THIS EXCITING  
HEIFER!

## TERRACE BANK ENTERPRISE-ET

100055687  
PTA +3.23SCC +0.3PL +0.2DPR  
PTA -660M -20F -16P 88R  
PTA% +.03 +.02  
PTAT +.30T 80R 12/11  
D/AV 17967M 3.9 699F 3.2 566P 8.3T

## NEVER-QUIT TUDECP TESS

100420614 4-01 85  
GOLD % FAT % PRT  
2-01 2 289 21310 3.8 812 3.2 692  
3-00 2 305 22600 3.5 801 3.2 721  
4-06 2 305 22580 3.3 737 3.5 794  
318 22850 3.3 746 3.5 805  
5-06 2 305 28970 4.0 1149 3.3 945

## NEXT DAM:

### ZUMBACH-FARMS CP ROBIN

100225929 3-09 88  
DHI % FAT % PRT  
4-08 2 300 23370 4.9 1144 3.1 723

*Emerald Farm*  
THE FENTON & JODREY FAMILIES  
23050 SR 136  
Winchester, OH 45697  
(937) 695-0697

# SWEET-PEPPER BLACK FRANCESCA

## EX-94 2E



### SWEET-PEPPER BLACK FRANCESCA

PUREBRED AYRSHIRE 10/16/04 FEMALE  
100390472

6-00 94 2E P- +325

NM\$ +21  
PTA +3.16SCC +2.7PL +0.7DPR  
PTA -631M -14F -15P 56R  
PTA\$ +21CY 12/11  
PTA% +.06 +.03  
PPA -1727M +4F -41P

CLASS	ST9	SR7	BD7	DF9	RA6	RW9	LS6	FA5
	FU8	UH9	UW8	UC7	UD7	TP5	TL4	LR6
DHI				%	FAT	%	PRT	
3-00	2	254	10550	4.8	511	3.4	356	
3-11	2	227	9450	5.4	506	3.4	324	
4-10	2	284	18165	3.4	621	3.6	654	
5-10	2	305	26950	5.2	1401	3.4	907	
6-09	2	151	18160	4.0	726	3.2	581	RIP
								1015
	PROJ	31610	4.0	1270	3.2	1015		

### BLACKADDAR B B KELLOGG

777850C  
PTA +3.13SCC +2.2PL -0.1DPR  
PTA -726M -32F -14P 98R  
PTA% -0.02 +.05  
PTAT +1.40T 96R 12/11  
D/AV 17891M 3.8 686F 3.2 571P

### SWEET PEPPER MOONRIVER FEATHER

DHI				%	FAT	%	PRT						
2-10	2	305	12517	3.9	494	3.3	407						
			319	12963	4.0	513	3.3	422					
3-11	2	305	14090	4.0	570	3.3	458						
			352	15700	4.2	654	3.3	520					
5-00	2	292	13990	4.5	634	3.4	477						
6-00	2	305	14590	4.0	583	3.3	479						
			334	15160	4.0	606	3.3	500					
7-02	2	305	15760	4.2	668	3.4	542						
			345	16730	4.2	711	3.5	580					
8-03	2	305	16220	4.2	682	3.3	536						
			308	16330	4.2	688	3.3	540					
9-04	2	304	15120	3.9	584	3.4	515						
10-03	2	283	17810	5.8	1025	3.3	595						
11-03	2	305	14710	4.2	624	3.5	511						
			348	15590	4.2	660	3.5	549					
12-04	2	301	17122	3.6	620	3.3	560						
			LIFE	3186	156515	4.3	6695	3.4	5258				

**NEXT DAM:**  
**SWEET PEPPER STARMAN HEATHER, VG-85**



*Deer Hill Farm*  
**BEVERLY DONOVAN & RICHARD CAVERLY**  
117 Wyman Road  
Benton, ME 04901  
(207) 453-7254  
deerhillfarmayrshires@yahoo.com

# SWEET-PEPPER BLACK FRANCESCA

## EX-94 2E



2011 TOTAL PERFORMANCE WINNER EASTERN STATES NATIONAL AYRSHIRE SHOW  
2011 TOTAL PERFORMANCE WINNER INTERNATIONAL AYRSHIRE SHOW  
2011 GRAND CHAMPION EASTERN STATES NATIONAL AYRSHIRE SHOW  
2011 RESERVE GRAND CHAMPION INTERNATIONAL AYRSHIRE SHOW

2010 UNANIMOUS ALL-AMERICAN 5-YR-OLD  
2010 RESERVE ALL-CANADIAN 5-YR-OLD  
2010 GRAND CHAMPION INTERNATIONAL AYRSHIRE SHOW  
2010 RESERVE GRAND CHAMPION ROYAL AGRICULTURAL WINTER FAIR

2009 HONORABLE MENTION ALL-AMERICAN 4-YR-OLD  
2009 RESERVE ALL-CANADIAN 4-YR-OLD  
2009 GRAND CHAMPION EASTERN STATES NATIONAL AYRSHIRE SHOW

FRANCESCA'S SON, DEER HILL FRANCIS, WILL HAVE THE FIRST OF HIS CALVES BORN THIS SUMMER. LIMITED SEMEN IS AVAILABLE.

HER ONLY DAUGHTER, DEER HILL FAIRY-TALE PRINCESS, IS AN AUGUST 2011 CALF Sired BY CALIMERO. FRANCESCA IS DUE AGAIN TO CALIMERO IN LATE JULY.

FRANCESCA COMES FROM 7 GENERATIONS OF EX OR VG DAMS. HER 14 YEAR OLD DAM, SWEET-PEPPER MOONRIVER FEATHER, EX-90, IS DUE THIS SUMMER AND WILL BE FLUSHED IN THE FALL.



*Deer Hill Farm*  
**BEVERLY DONOVAN & RICHARD CAVERLY**  
117 Wyman Road  
Benton, ME 04901  
(207) 453-7254  
deerhillfarmayrshires@yahoo.com

# CEDARVALE BLACK CHINA

## EX-92



### CEDARVALE BLACK CHINA

PUREBRED AYRSHIRE 03/01/01 FEMALE  
100190933 9-02 92 P- +253

NM\$ -41  
PTA +3.04SCC +2.1PL +1.1DPR  
PTA -753M -37F -19P 47R  
PTA\$ -41CY 12/11  
PTA%  
PPA -1899M -100F +.03 -48P

CLASS	ST9	SR9	BD9	DF8	RA5	RW8	LS7	FA4
	FU5	UH7	UW8	UC6	UD5	TP6	TL6	LR9
<b>GOLD</b>				%		FAT	%	PRT
2-03	2	305	15580	3.9		607	3.7	572
			348	17610	3.9	690	3.7	652
3-04	2	305	17860	3.8		677	3.5	629
			346	19300	3.8	729	3.5	683
4-07	2	305	22600	3.4		760	3.3	751
			365	25030	3.4	852	3.4	848
6-04	2	305	22150	3.5		781	3.3	737
			365	25540	3.6	922	3.4	857
8-09	2	305	24330	3.2		771	3.2	775
			323	24850	3.2	792	3.2	800
<b>LIFE</b>			1852	116140	3.6	4159	3.4	3989

### BLACKADDAR B B KELLOGG

777850C  
PTA +3.13SCC +2.2PL -0.1DPR  
PTA -726M -32F -14P 98R  
PTA\$ -02 +.05  
PTAT +1.40T 96R 12/11  
D/AV 17891M 3.8 686F 3.2 571P

### MAPLEBROOK CHI-CHI

100012501 5-09 88

NOM JR ALL-AMERICAN 5-YEAR-OLD - 2000

### CHINA'S SHOW WINNINGS:

2ND JR 2 - 2003 CENTRAL NAT'L  
2ND JR 3 - 2004 CENTRAL NAT'L  
1ST JR 3 - 2004 CENTRAL NAT'L JR  
RES ALL-AMERICAN JR 3 - 2004  
RES JR ALL-AMERICAN JR 3 - 2004  
1ST 4-YR-OLD - 2005 SOUTHERN NAT'L JR  
HM ALL-AMERICAN 4-YR-OLD - 2005  
JR ALL-AMERICAN 4-YR-OLD - 2005  
1ST AGED COW - 2007 CENTRAL NAT'L JR  
SR CHAMPION - 2007 CENTRAL NAT'L JR  
GRAND CHAMPION - 2007 CENTRAL NAT'L JR  
NOM ALL-AMERICAN AGED COW - 2007  
JR ALL-AMERICAN AGED COW - 2007  
5TH AGED COW, 2011 INTERNAT'L

*Easter Brook*

**DONALD DAMROW FAMILY**

W5378 Eagle Road, Juneau, WI 53039

Don Cell (920) 344-0665 • Zach Cell (920) 344-2065



*Your Cows - Our Bulls.  
We need each other!*

*Check out the outstanding  
line-up of Taurus  
Ayrshire Sires.*

*Lets work together  
for Breed Improvement.*

*Keep us informed of  
bull dams and young sires  
for Taurus to consider.  
Best wishes.*

**Taurus Service, Inc.**

PO Box 164, Grist Flat Rd  
Mehoopany, PA 18629, USA

Phone: 570-833-5123, Fax: 570-833-2690

email: [taurus@epix.net](mailto:taurus@epix.net) [www.taurus-service.com](http://www.taurus-service.com)



**PROFITABLE  
GENETICS™**

# U.S. Ayrshires

2010 LEADING RECORDS FOR AGED COWS  
GAGNANTE DES VACHES MATURE POUR LES MEILLEURS RECORD 2010

## 10 YEARS & OLDER

FAMILY-AF-AYR DUKE BEAUTI  
10-10 305D 28,118 ECM (12,754 KG)  
LUKE BORCHARDT, IL

WOODLAND VIEW JASMINE  
11-07 305D 26,964 ECM (12,231 KG)  
GENE HALL JR, OK

VALLEY-VIEW AL'S TOLAN  
11-03 305D 25,561 ECM (11,594 KG)  
VALLEY VIEW AYRSHIRES, IA

SHARWARDS CORNELIUS DANDY  
11-00 305D 24,642 ECM (11,178 KG)  
DARRYL KEEHNER, IA

WILSHORE SOLDIER'S LIZA  
11-03 305D 23,658 ECM (10,731 KG)  
MCKENZIE STANFORD, OK

YELLOW BRIAR PADDY'S SPICE  
10-06 305D 23,619 ECM (10,714 KG)  
HUNTER HALL, OK

TENTINGER DEACON ROBIN  
11-07 305D 22,493 ECM (10,203 KG)  
JIM & SHARON TENTINGER, IA

SHIREDALE MAYA'S BABE  
10-11 305D 22,407 ECM (10,164 KG)  
ROBERT JUMP, OH

GRAND-VIEW OLY 2 DIVA  
11-06 305D 21,495 ECM (9,750 KG)  
TIMOTHY BUSCH, WI

LEMOLA TRIDENT JTHUG  
12-04 305D 20,948 ECM (9,502 KG)  
EMERALD FARMS, OH

## 5 - 10 YEAR OLDS

BAR-VUE BATTLE PENNY  
6-10 305D 34,766 ECM (15,770 KG)  
IRRTHUM FARM INC., MN

SUNNY-ACRES NOLAN'S SATIN  
5-06 305D 34,394 ECM (15,601 KG)  
GREGORY EVANS, NY

TENTINGER LOU JAYNE  
7-00 305D 33,088 ECM (15,008 KG)  
JIM & SHARON TENTINGER, IA

VALLEY-VIEW SENATOR CATO  
8-08 305D 32,381 ECM (14,688 KG)  
VALLEY VIEW AYRSHIRES, IA

TENTINGER LOU BETTY  
6-08 305D 31,873 ECM (14,457 KG)  
JIM & SHARON TENTINGER, IA

FAMILY-AF-AYR KELLOGG LACEY-ET  
6-01 305D 31,502 ECM (14,289 KG)  
SARAH BORCHARDT, IL

CEDARVALE PRINCE ABBA  
7-00 305D 31,360 ECM (14,225 KG)  
DOUGLAS EVANS, NY

ZUMBACH-FARMS TK GWEN  
8-08 305D 30,146 ECM (13,674 KG)  
WADE & JENNIFER BRUNSMAN, IA

HEIMS PARDNER TRIDENT  
5-09 305D 30,101 ECM (13,654 KG)  
JAMES & JUDY HEIMS, IA

CONEBELLA PARDNER'S BRIANNA  
7-01 305D 30,062 ECM (13,636 KG)  
DONALD GABLE, PA

*The Choice For Longevity*  
*Le Choix de Longévité*



A member of the U.S. Livestock Genetics Export  
1224 Alton Darby Creek Rd., Suite B, Columbus, OH USA 43228  
Ph: 614.335.0020 ~ Fax: 614.335.0023 ~ [www.usayrshire.com](http://www.usayrshire.com)